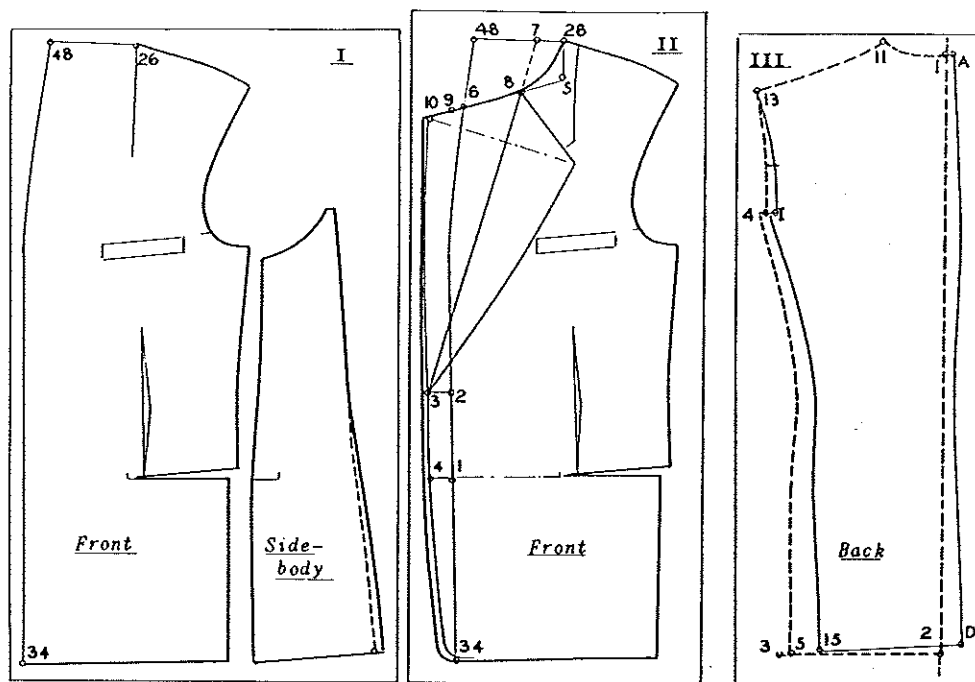


2 BUTTON SINGLE BREASTED
SMALL NOTCH-ONE PIECE BACK



To draft for different style effects, either the drape model, or regular sack coat can be used as a guide. If the drape model is used, merely draft pattern up to and including the 'Center front line', eliminating the 3 button style, and add whatever style desired.

I

FRONT: To draft a 2 button single, mark outline of drape model front and label points 26-48-34 as indicated. The line from 34 to 48 equals the 'Front center line'.

II

1 is a point in line with side pocket.
2 from 1 is $4\frac{1}{2}$ ". (Button spacing)
3 from 2 is 1 inch.
4 from 1 is $\frac{3}{4}$ ". Draw line 3 to 4, and with aid of curve stick shape from $\frac{1}{4}$ " above 34 as shown by light line. (Represents sewing line)

5 from 26 is $\frac{1}{8}$ Breast on division less $\frac{1}{2}$ ".
6 from 48 is $\frac{1}{6}$ Breast on division plus $\frac{1}{2}$ "; Draw line 5 to 6 and extend line toward 10.
7 from 26 is $1\frac{1}{4}$ " (Collar stand). Draw breakline, 7 to 3.
8 falls on 5-6 line. Shape run of gorge from 26 to 8 as indicated.
9 from 8 is $2\frac{1}{2}$ " (Collar notch).
10 from 9 is 1". Shape a slight rounding line from 10 to 3. Add $\frac{1}{4}$ " seam to front edge. Buttons will sew on points 1 and 2.

III

ONE PIECE BACK: To eliminate the center back seam, a manipulation is required so that center back line can be laid on the fold of the material.

On clean sheet of paper, draw a dash line longer than length of back. Label points 1 and 2.

(Continued on next page)

Points A-11-13-I-15-D, represent the original backpart.

Place center of back along dash line with A, $\frac{1}{2}$ " from 1, and B, $1\frac{1}{2}$ " from 2. Retaining pattern in this position, mark shoulder and back of neck (13-11 and 1) with dash line. 13 is pivot-point.

3 from 15 is 2". Pivot from 13 and

shift back from 15 to 3. Mark dash line from 4 to 13.

4 falls in line with I.

5 from 3 is $\frac{1}{2}$ ". Re-mark side from 4 to 5, and bottom run, 5 to 2.

Dash lines illustrate finished results.

The backpart at seat line will increase $\frac{1}{2}$ ". Reduce the side body $\frac{1}{2}$ " as shown.

SHAWL COLLAR
1 BUTTON SINGLE BREASTED

I

Mark outline of front up to and including center front line.

Label points A and B, as indicated.

1, is a point in line with side pocket.

2 from 1 is 3".

3 from 2 is 1". Shape front edge to bottom.

GORGE RUN:

4 from A is $\frac{1}{12}$ th Breast on division.

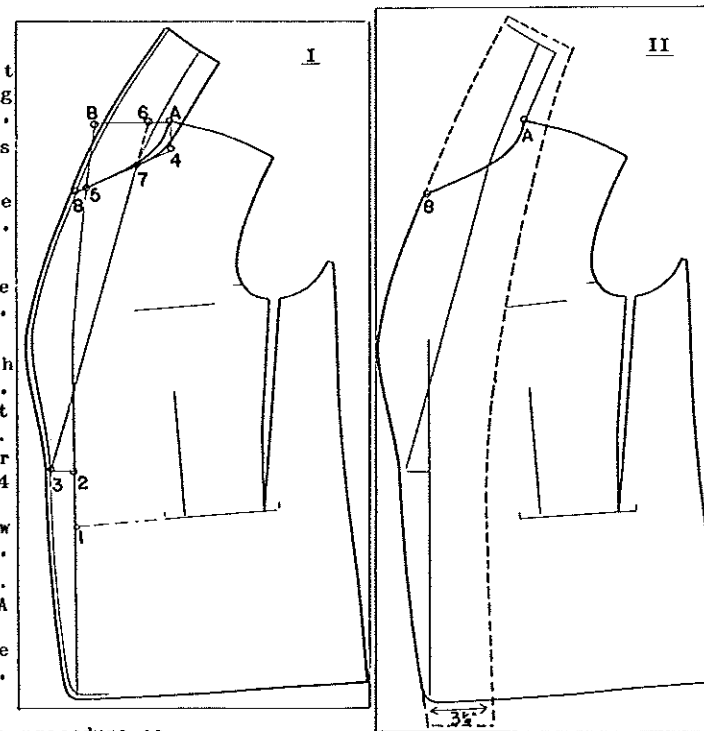
5 from B is $\frac{1}{6}$ Breast on division plus $\frac{1}{4}$ ".

Draw guide line for run of gorge from 4 to 5.

6 from A is $1\frac{1}{4}$ ". Draw breakline, 6 to 3.

7 falls on 4-5 line. Shape run of gorge, A to 7.

8 from 7 is $2\frac{1}{2}$ ". Shape lapel line, 3 to 8.



UNDER COLLAR: Follow procedure as described on page 43. Shape as indicated in diagram. Add $\frac{1}{4}$ " seam to front edge, lapel and under collar.

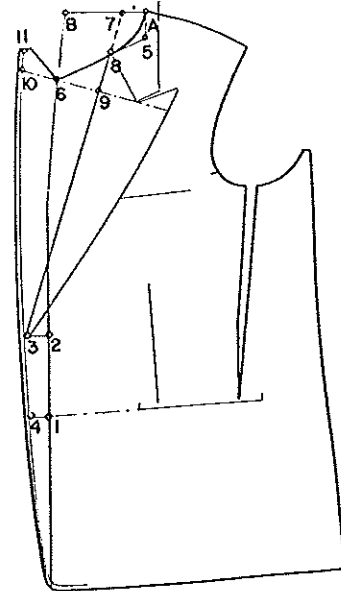
II

FRONT FACING and TOP COLLAR: The front facing and upper collar is combined into one piece, eliminating run of gorge on upper collar.

Using front and under collar as a guide, mark inside of under collar with points touching 8 and A, of front as shown. Dash lines illustrate the finished product.

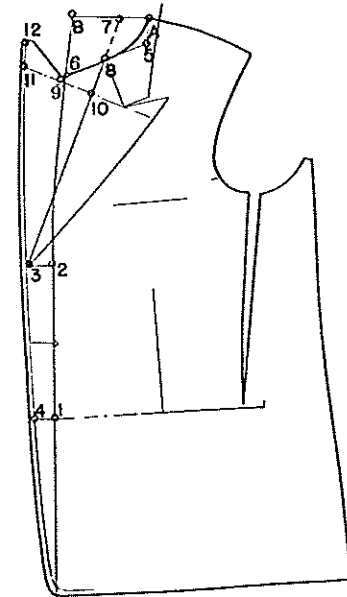
2 BUTTON SINGLE BREASTED
PEAK LAPEL

- Mark outline of front, and label points A-B and 1 as indicated.
- 2 from 1 is $4\frac{1}{2}$ ".
 - 3 from 2 is 1 inch.
 - 4 from 1 is $\frac{3}{4}$ ". Shape front edge from 3, to bottom run.
 - 5 from A is $\frac{1}{12}$ th Breast on division.
 - 6 from B is $\frac{1}{6}$ Breast on division plus $\frac{1}{2}$ ". Draw line 5 to 6.
 - 7 from A is $1\frac{1}{4}$ ". Draw line 3 to 7.
 - 8 falls on 5-6 line. Shape run of gorge.
 - 9 is located by laying long arm of square on 3-8 line (Break-line) with short arm resting on 6. Square back to breakline.
 - 10 from 9 is $3\frac{3}{4}$ ". (Width of lapel) Shape lapel from 3 to 10, and continue line toward 11.
 - 11 from 10 is $1\frac{1}{2}$ ". Draw line 11 to 6. Add $\frac{1}{2}$ " seam to front edge and lapel run.



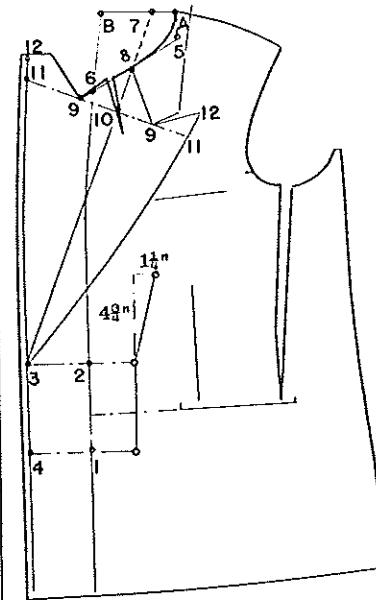
3 BUTTON SINGLE BREASTED
PEAK LAPEL

- Mark outline of front, and label points A-B-1.
- 2 from 1 is $8\frac{1}{2}$ ". Equals twice the button spacing.
 - 3 from 2 is 1 inch.
 - 4 from 1 is $\frac{3}{4}$ ". Draw line 3 to 4, and shape to bottom line.
 - 5 from A is $\frac{1}{12}$ th Breast on division.
 - 6 from B is $\frac{1}{6}$ Breast on division plus $\frac{1}{2}$ ". Draw line 5 to 6.
 - 7 from A is $1\frac{1}{4}$ ". Draw breakline 7 to 3.
 - 8 falls on 5-6 line. Shape run of gorge.
 - 9 from 8 is $2\frac{3}{4}$ ". Draw line 9 to 10.
 - 10 falls on breakline.
 - 11 from 10 is $3\frac{1}{2}$ ". Shape lapel from 3 to 11.
 - 12 from 11 is $1\frac{1}{2}$ ". Draw line 12 to 9. Add $\frac{1}{2}$ " seam to front edge and lapel.



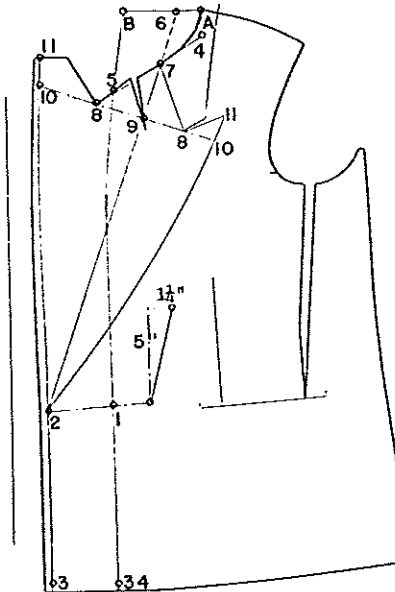
2 BUTTON DOUBLE BREASTED
3 TO SHOW

- Mark outline of front, to center-front-line, and label points A and B.
- 1, is 2" below line of side pocket.
 - 2 from 1 is $4\frac{3}{4}$ ".
 - 3 from 2 is $3\frac{1}{2}$ ". Equals lap allowance for double breasted sack coat.
 - 4 from 1 is $3\frac{1}{4}$ ". Draw line 3 to 4 and extend to bottom line.
 - 5 from A is $\frac{1}{12}$ th Breast on division.
 - 6 from B is $\frac{1}{6}$ Breast on division plus 1". Draw line 5 to 6 and extend.
 - 7 from A is $1\frac{1}{4}$ ". Draw line 7 to 3 (Breakline).
 - 8 falls on 5-6 line.
 - 9 from 8 is $3\frac{1}{2}$ ".
 - 10 is located by laying long arm of square on breakline with short arm resting on 9.
 - 11 from 10 is 5". Equals width of lapel plus $\frac{1}{4}$ ". This will produce a straighter lapel run. Cut out $\frac{1}{4}$ " dart at gorge, which will absorb excess.
 - 12 from 11 is $1\frac{1}{2}$ ". Shape to 9, and to 3 as indicated. Add $\frac{1}{2}$ " seam to front-edge.
- LAPEL SHAPER:** 11 from 10 is $4\frac{1}{4}$ "; 12 from 11 is $1\frac{1}{2}$ ". Mark buttons 6" from front edge, as illustrated.



1 BUTTON DOUBLE BREASTED
2 TO SHOW

- Mark outline of front, and label points 34-A-B.
- 1, is $\frac{1}{2}$ " above line of side pocket.
 - 2 from 1 is $3\frac{1}{2}$ ".
 - 3 from 34 is $3\frac{1}{2}$ ". Draw line 2 to 3. Lap allowance.
 - 4 from A is $\frac{1}{12}$ th Breast on division.
 - 5 from B is $\frac{1}{6}$ Breast on division plus $1\frac{1}{2}$ ". Draw line 4 to 5.
 - 6 from A is $1\frac{1}{4}$ ". Draw line 6 to 2.
 - 7 falls on 4-5 line. Shape run of gorge, A to 7.
 - 8 from 7 is $3\frac{3}{4}$ ".
 - 9 is located by laying long arm of square on break line with short arm resting on 8.
 - 10 from 9 is 5". Equals width of lapel plus $\frac{1}{2}$ ".
 - 11 from 10 is $1\frac{1}{2}$ ". Shape to 8, and to 2 as shown.
- LAPEL SHAPER:** 10 from 9 is $4\frac{1}{4}$ "; 11 from 10 is $1\frac{1}{2}$ ". Bottom button is 6" from front edge. Mark as illustrated.



Regular Shirt

MEASUREMENTS:

Height	5'8"
Waist length	17½ inches
Full length	32 "
Breast	38 "
Collar size	15 "
Sleeve length	33 "

Drafting power is half Breast, 19.

A, is starting point, square out and down.

1 from A is 3½". Equals Shoulder height, plus a seam at run of neck.

2 from A is the Waist length.

3 from A is Full length plus ½".

4 from 2 is 7". Equals Seat line.

5 from 1 is 1/3 Breast on division. Square out from points 5-2-4-3.

6 from 5 is 1/4 Breast on division.

7 from 6 is 1/8 Breast on division.

8 from 7 is 1½". Square up, past top line.

9, is ½ inch past the top line.

10 from A is Collar size on 8th division (1½").

11 from 10 is 1½". Square up toward 12.

12 from 11 is Collar size on 8th division. Shape neck run A to 12. Draw line 12 to 9 and continue toward 13.

13 from 9 is ¾ inch.

14 from 5 is half the full breast measure, 19".

15 from 14 is 4½". Equals allowance for ease and seams.

16 is center between 15 and 5. Square down to bottom line.

Shape arm-hole, 13 to 16 as indicated.

17 falls on waistline.

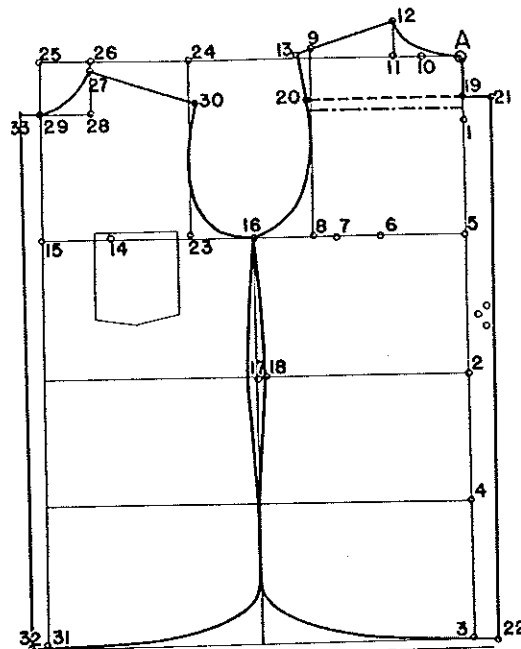
18 is ½" from straight line. Shape side seam and run of bottom.

DOUBLE YOKE:

19 from A is 2½". Square out toward 20 (Dash-lines).

20 falls on Arm hole. Add ¾" to line 20-19. Equals two seams to be sewn off at yoke line.

For fullness to be pleated in at center back, add 1½" from 19 to 21 and 3 to 22. Line 21-22 is laid on fold of fabric.



FRONTPART:

23 from 16 is 1/8 Breast on division plus 1". Square up to the top line.

24 falls on top line.

25 is squared up to top line from 15.

26 from 25 is Collar size on 8th division plus ¾". Square down toward 28.

27 from 26 is ½ inch.

28 from 27 is Collar size on the 8th division plus ½". Square out toward 29.

29 falls on 15-25 line. Shape neck run, 27 to 29.

30 from 24 is 2". Draw line 27 to 30 for shoulder line.

Shape Arm-hole 30 to 16 as indicated.

Shape side-seam and bottom run, the same as the backpart.

Continue line 25-15 to bottom.

31 falls on bottom line.

32 from 31 is 1 inch;

33 from 29 is 1"; draw line 33 to 32. Equals allowance for Button-stand. The shirt pocket is finished ¾" from 23, 1" above Breast line and 4¾" long.

SHIRT SLEEVE: The One piece Sleeve, Collar, etc., can be drafted on the fold of a sheet of paper that is creased length-wise.

Starting about 6 inches below top of paper, square out from fold, as indicated by line A-1. Label point of square, A.

1 from A is 1/2 Breast on division. (9½" in this instance, where the Breast is 38).

2 from A is 1/6 Breast on division.

3 from 2 is 22". Equals Shirt-sleeve length, (33" less width of yoke, (8½" less finished width of cuff. (2½") Square out toward 8.

4 from 2 is ½". Draw a line from 4 to 1.

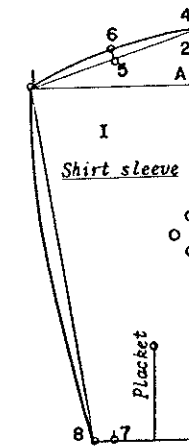
5 is center between 1 and 4. Square up toward 6.

6 from 5 is ¾". Shape cap of sleeve using points 4-6-1 as a guide.

7 from 3 is 5½". Equals 10½" opening at cuff line.

8 from 7 is 1½". Equals allowance for tucks. Draw line 8 to 1, and shape inseam of sleeve as shown.

Placket-line is center between 7 and 3, and is 5 inches long.



NECK BAND:

From a point along fold of paper, square out toward 4, and label point of square, 1.

2 from 1 is 2½". Square out toward 3:

3 from 2 is half of Collar size, 7½". Square up toward 4.

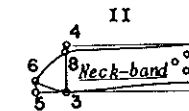
4, falls on top line.

5 from 3 is 1". Equals width of Button-stand.

6 from 5 is ½ inch.

7 from 1 is 1¾". Shape lower part of Neck band using points 7-3-6 as a guide.

8 from 3 is 1¾". Shape upper part of Neck band using points 1-8-6 as a guide.



COLLAR:

9, is squared out toward 12, off fold of paper.

10 from 9 is 2¾". Equals ½" more than neck band. Square out toward 11.

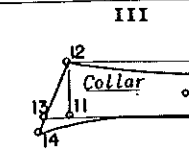
11 from 10 is half of Collar size, 7½". Square up toward 12.

12 falls on top line.

13 from 11 is 1". Draw line 12 to 13, and extend toward 14.

14 from 12 is 4½". Equals length of points plus 2 seams. Shape lower portion of collar from 10 to 14 as shown.

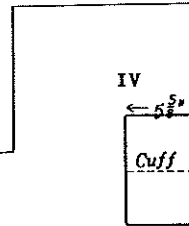
15 from 10 is 2½". Equals ½" more than width of neck-band at center back. Shape curved line from 15 to 12.



CUFF:

The cuff is drafted for twice the width, plus two seams. Equals 5¾". The length of the cuff is drafted on the fold.

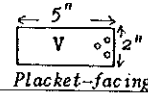
Equals half the opening plus two seams. (5½").



(Continued on next page)

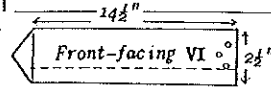
V

PLACKET FACING, can be drafted 2" wide, by 10" in length.



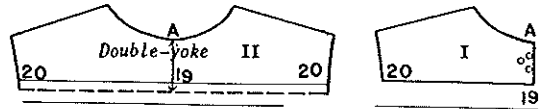
VI

FRONT FACING, is drafted the same length as from 22 to 33 on front part of shirt. The Button-stand of facing is reduced 1" in width. Shape as indicated in diagram.



The seams are allowed for in the draft.

SPORTS SHIRT AND COLLAR DRAFT



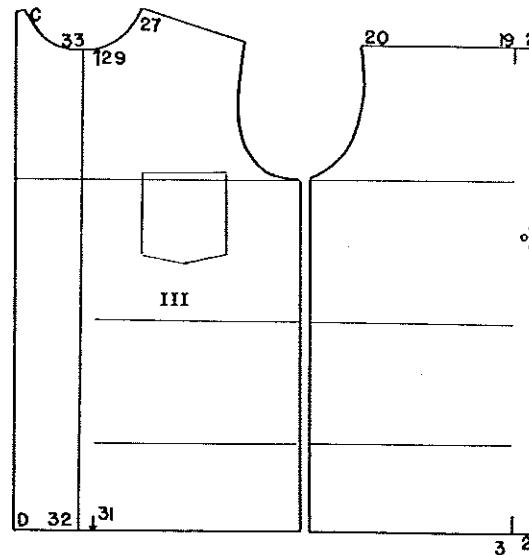
The Sport shirt can be drafted by using the regular shirt as a guide. The full length of the Sport shirt is about 2" shorter than the regular shirt. Side seams are usually left straight.

I-Represents the Yoke.

II-Shows the Yoke on the open. Center back is indicated by line A-19. Add $\frac{3}{8}$ " for 2 seams which will compensate for the seams sewn off of backpart and yoke along this line.

III-Facing and Frontpart can be drafted in one piece. Line 29-31 equals Front center-line. Add $\frac{3}{8}$ " for lap, from 31 to 32, and 29 to 33. Distance from C to 33 equals same as 33 to 27. 32 from D is $3\frac{3}{4}$ ". Equals width of facing.

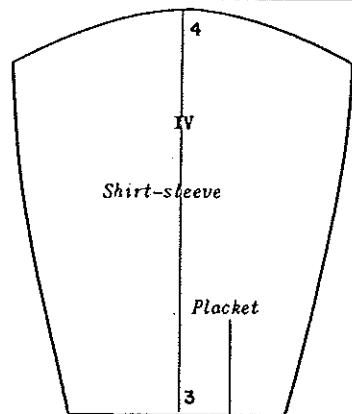
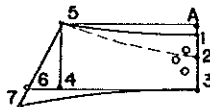
IV-Illustrates the Shirt sleeve on the open. Line 4-3 is the grain line.



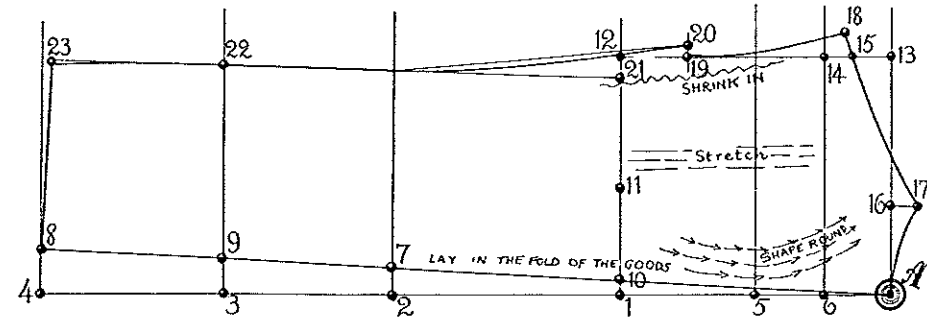
V-SPORT COLLAR DRAFT:

A, is starting point, square out and down.

- 1 from A is $\frac{1}{2}$ inch.
- 2 from 1 is $1\frac{1}{2}$ ". Equals Collar-stand plus a seam.
- 3 from 2 is $1\frac{3}{4}$ ". Square out toward 4.
- 4 from 3 is half the Collar size; Square up toward 5.
- 5 falls on top line. 6 from 4 is $1\frac{1}{4}$ ". Draw line 5 to 6.
- 7 from 5 is $4\frac{3}{4}$ ". Shape from 1-5, 5-7, 7-3 as shown.



How to Make a One-Piece Back



- A is the starting point. Square both ways.
- 1 from A is the scye depth plus $\frac{1}{4}$ inch.
 - 2 from A is the waist length.
 - 3 from 2 is 6 inches.
 - 4 from A is the full length.
 - 5 is halfway between A and 1.
 - 6 is halfway between 5 and A. Square out all lines.
 - 7 from 2 is 1 inch. Draw a line from A through 7 to bottom.
 - 8 falls on bottom construction line. Lay the square on line A-8 and square forward.
 - 9 and 10 also present themselves with line A-8.
 - 11 from 10 is $3\frac{1}{4}$ inches.
 - 12 from 11 is $\frac{1}{4}$ th of breast on the square. Square up.
 - 13 appears on line squared out from A.
 - 14 appears on line squared out from 6.
 - 15 from 14 is $\frac{3}{4}$ inch.
 - 16 from A is $\frac{1}{6}$ th of breast on the square.

17 from 16 is 1 inch. Connect 17 and 15.

18 from 17 is the shoulder width plus $\frac{3}{8}$ inch for fullness.

19 from 12 is $\frac{1}{8}$ th of breast on the square. Shape from 18 to 19.

20 from 19 is a scant $\frac{3}{8}$ inch.

21 from 11 is $\frac{3}{4}$ inch; this may be more or less according to taste.

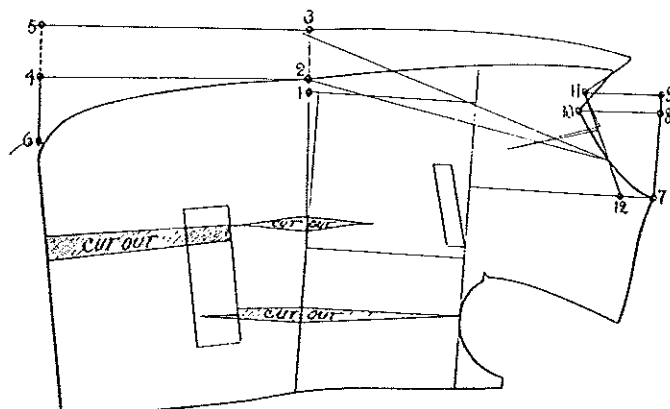
The more you move 21 in from 12, the more shape you create. The nearer that you bring 21 to 12, the straighter the side seam.

22 from 9 is $\frac{1}{3}$ rd of seat on the square plus $\frac{1}{4}$ inch. Connect 21 with 22.

23 falls on the line squared out from 8. Draw a line from 20 into waist-line formed by line 21-22 and hollow as shown.

In laying pattern on cloth, line A-7-8-9-10 is placed in the fold of the goods. In making, shrink the top of back forward from above 10 toward 16. Stretch the goods in the center. Shrink in between 21 and 14.

Double-Breasted into Single-Breasted Pattern and Vice-Versa



- 1 represents the point below the waist that is found by the difference between chest and waist, etc.
- 2 represents the front of the single-breasted coat.
- 3 from 2 is $2\frac{1}{2}$ inches and gives a button spread of $5\frac{1}{2}$ inches or, if you prefer to figure from the finished front, $6\frac{3}{8}$ inches from the finished edge. If you want more or less, figure accordingly.

Lay the square on line 1-2-3 and square down. If you were making a single-breasted pattern,

- 4 would appear on the line squared down from 2;
- 5 would appear on the line squared down from 3, and would be the double-breasted front edge with $\frac{1}{4}$ inch seam allowed.
- 6 is $3\frac{1}{4}$ inches from 4 or, is double-breasted, $5\frac{3}{4}$ inches from 5. Square back to 6, from 5 or 4, whichever you are using.
- 7 represents the strap point. Square out.
- 8 from 7 is $\frac{1}{4}$ th breast on the square less $\frac{1}{2}$ -inch and is the single-breasted gorge. Square down.
- 9 from 7 is $\frac{1}{4}$ th of breast on the

square plus $\frac{3}{8}$ inch and represents the double-breasted gorge. Square down.

- 10 from 8, the single-breasted gorge point, is $\frac{1}{6}$ th of breast on the square plus $\frac{7}{8}$ inch.
- 11 from 9 is $\frac{1}{6}$ th of breast on the square plus $\frac{5}{8}$ inch and represents the double-breasted gorge point.
- 12 from 7 is $\frac{1}{12}$ th of breast on the square and can be used for both.

In double-breasted only, take out a V in the gorge as shown. If you had a double-breasted pattern and wanted to convert it into a single-breasted, why, just reverse the whole procedure. You will notice points 3 from 2 and 5 from 4 are parallel. I mention this because you may have a double-breasted pattern sometime that has no construction lines. In that case, just reduce equally $2\frac{1}{2}$ inches at 2-3 and 5-4. Then shape the single-breasted front according to taste. To make a single-breasted from a double-breasted without construction lines you will be compelled to find points 1 and 2 and to square down to establish point 4 (the actual single-breasted front).

SUGGESTED ACTIVITIES

1. Draft different sizes and styles using Regular Sack-Coat-Draft as a guide.
2. Make manipulation for a Drape, using regular sack coat as a basis.
3. Observe "Table of Proportions" on page 59. Draft the *SHORT, REGULAR, LONG*.
4. Draft the "Full Stout" sack-coat, (42 breast, 42 waist) using "Stout Sack Coat" on page 66 as a guide. Then apply Stout-Manipulation.
5. Draft Loafer Jacket, with facing and frontpart in one piece.
6. Name correction required to coat when—
 - a) figure has full chest, small back.....
 - b) shoulders are high, short neck.....
 - c) chest is flat, large back.....
 - d) sleeves are to fall toward back.....
 - e) shoulders are made wider.....
 - f) right shoulder is $\frac{1}{2}$ " high.....

Regular Vest

The Vest, (Waist coat) is measured much the same as the sack coat. However, the Back length (A-8) should be determined by adding 2" to the Waist length.

The Opening, (36-37) is taken from the Back center at nape of neck, (A) to desired opening below the Breast line. The Front length is also taken from the Back center at nape of neck and down to desired length below Waistline. The standard length on the Vest with long points should be measured 3" below the Waistline on the figure.

The Waist measure should be at least 1 inch larger than the Trouser-waist.

MEASUREMENTS:

Height	5'8"
Waist length	17 inches
Back length	19 "
Opening	13 $\frac{3}{4}$ "
Front length	26 $\frac{1}{2}$ "
Breast	38 "
Waist	34 "

Drafting power is half Breast, 19.

BACKPART:

A, is starting point, square out and down.

1 from A is 3 $\frac{1}{4}$ ". Equals the Shoulder height.

2 from A is the Waist length.

3 from A is 19 $\frac{3}{4}$ ". Equals Back-length plus $\frac{3}{4}$ " for makeup.

4 from 1 is $\frac{1}{3}$ Breast on division. Square forward off all points.

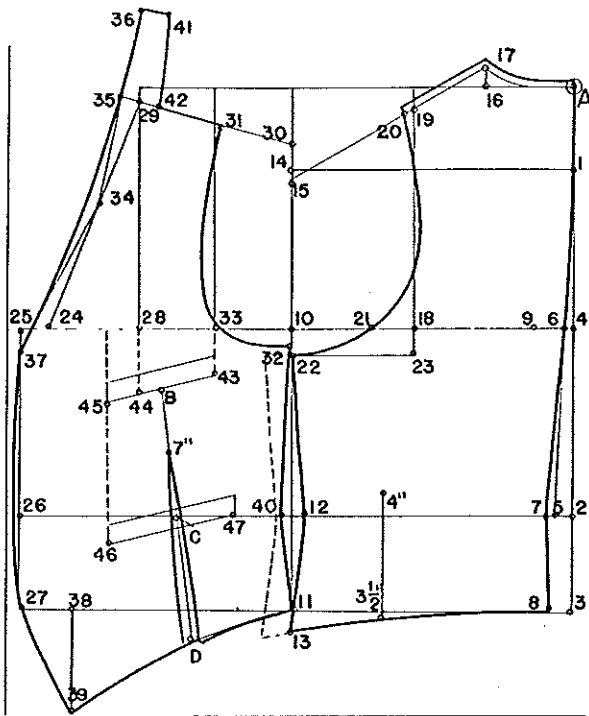
5 from 2 is $\frac{1}{2}$ ". Draw line 5 to 1.

6 falls on the Breast line.

7 from 5 is $\frac{3}{8}$ ".

8 from 3 is $\frac{3}{8}$ ". Shape center-back using points 8-7-6-1-A, as a guide.

9 from 6 is 1 inch.



10 from 9 is $\frac{1}{2}$ Breast on division (9 $\frac{1}{2}$ "). Square down to bottom line.

11 falls on bottom line.

12 from 7 is $\frac{1}{2}$ Waist on division plus 1" (9 $\frac{1}{2}$ "). Draw line 10 to 12, 12 to 11.

13 from 11 is $\frac{3}{8}$ ". With aid of curve stick shape bottom run using points 8-13 as a guide.

14 falls on intersection of line 1, and 11-10 line.

15 from 14 is $\frac{1}{2}$ inch.

16 from A is $\frac{1}{8}$ Breast on division plus 1".

17 from 16 is $\frac{3}{8}$ ". Draw line 17 to 15. Also shape back neck run, A to 17.

18 is center between 9 and 10. Square up to top line.

19 falls on intersection of 15-17 line.

20 from 19 is $\frac{3}{8}$ ".

21 from 18 is 1 $\frac{1}{2}$ inches.

22 from 10 is 1 inch.

23 from 18 is 1". Draw line 22 to 23.

The Back dart is 4" long and 3 $\frac{1}{2}$ " from the side seam.

Add $\frac{1}{4}$ " seam at back-neck run, A to 17 and back shoulder run, 17 to 20 as shown. Shape Armhole from 20-21-22.

The Backpart of the Vest is usually cut out of the same body lining as the coat.

Add 1" outlet to side seam as indicated by dash lines.

FRONTPART:

In preparing to draft the front of the Regular Vest, extend lines A-4-2-3.

24 from 10 is $\frac{1}{2}$ Breast on division. 25 from 24 is 1". Square down toward 27.

26 intersects the Waistline.

27 falls on Back length line.

28 from 25 is $\frac{1}{4}$ Breast on division. Square up to top line.

29 is $\frac{1}{2}$ " below top line.

30 from 14 is 1". Draw line 30 to 29.

31 from 29 is 3 $\frac{1}{4}$ ". Equals $\frac{1}{4}$ " less than back shoulder, 17 to 20.

32 from 10 is $\frac{3}{8}$ ". Equals $\frac{1}{4}$ " less than distance from 10 to 22.

33 from 10 is $\frac{1}{8}$ Breast on division plus $\frac{1}{4}$ ". Square up to top line.

Using points 32-33-31 as a guide, shape the Arm-hole as indicated.

OPENING: Draw a line from 29 to 24.

34 from 29 is $\frac{1}{4}$ Breast on division.

35 from 29 is $\frac{3}{8}$ ". Connect points 34 to 35, and continue line toward 36.

36 from 35 is $\frac{1}{8}$ Breast on division plus 1". Equals same distance as A to 17 on back-neck run.

37 from 36 is 14 $\frac{3}{8}$ ". Equals opening plus 1" for makeup. Shape run of Opening as indicated.

FRONT LENGTH:

38 from 27 is 2". Square down toward 39.

39 from 38 is 4". Equals Front length plus 1" for makeup, measuring from 36 to 39. Shape Front edge, using points 27-37-39 as a guide.

40 from 26 is $\frac{1}{2}$ Waist on division plus 1 $\frac{1}{2}$ ". Equals $\frac{1}{4}$ th Waist (8 $\frac{1}{2}$ ") plus 1 $\frac{1}{2}$ " for makeup. Shape Side seam using points 11-40-32 as a guide.

Also shape the bottom run from 11 to 39 as indicated.

NECK PIECE:

41 from 36 is 1 $\frac{1}{2}$ inches.

42 from 35 is 1 $\frac{1}{2}$ inches.

WELT POCKETS:

43 from 33 is 1 $\frac{1}{8}$ inches.

44 from 28 is 2 $\frac{1}{2}$ ". Draw line 43 to 44 and continue line toward 45.

45 from 43 is 4". Square down from Breast line toward 46.

46 from 45 is 5 $\frac{3}{8}$ ". Draw line toward 47 parallel to 45-43 line.

47 from 46 is 5".

WELTS are finished $\frac{3}{8}$ " wide. Mark as indicated.

FRONT DART:

B, is center between 43 and 45.

C, is center between 46 and 47. Draw line B to C, and continue toward D.

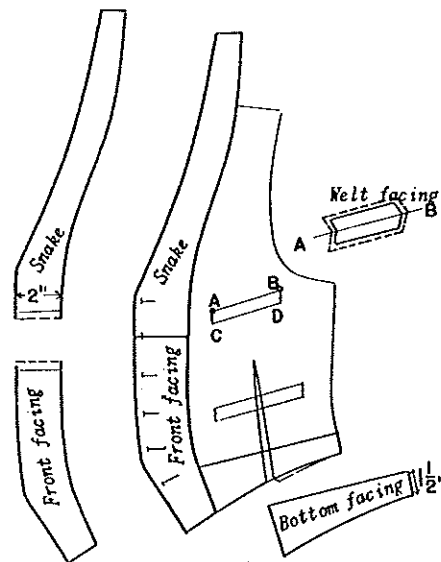
D, falls on bottom run. Reduce $\frac{1}{4}$ " on each side, and make dart 7" long. Re-mark as indicated.

VEST FACINGS

Use outline of Frontpart as a guide to draft the Vest facings.

The Snake and Front facing should be separated at the second button. Add a seam to Front and Snake as indicated by dash lines. Trace outline of bottom facing as illustrated.

To draft the Welt facing, mark outline of welt pocket (A-B-C-D) with line A-B on the fold of paper. Add a seam on sewing edges as shown by dash lines. Lower welt is 1" longer than upper welt pocket.



SPORTS VEST WITH PINCH PLEATS

I

To draft the Sports Vest, use the outline of Regular Frontpart as a guide. Label points 26-40-39 respectively. Line 26-40 represents the Waistline.

E from 26 is $1\frac{1}{8}$ ". Draw line 40 to E, and separate pattern at this line as shown.

LOWER FRONT:

F from E is $\frac{5}{8}$ ". Re-shape to F as shown by broken line.

G from 39 is $\frac{5}{8}$ ". Equals amount lost from E to F.

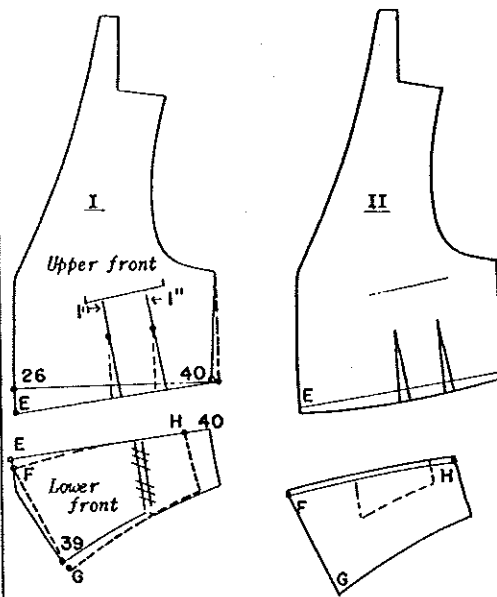
H from 40 is $\frac{7}{8}$ ". Equals front dart plus two seams, which is eliminated, joining lower front into one. Re-shape from H, and down to G as indicated. Also draw line F to G.

UPPER FRONT: Add $\frac{3}{8}$ " to side seam at 40. Re-mark to armhole as indicated.

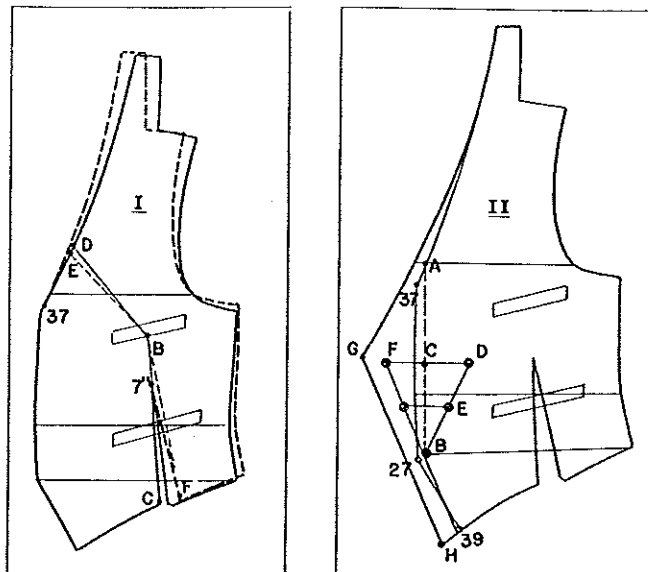
Pinch pleats are finished $\frac{5}{8}$ " wide, 3" long. Distance along line E-40 should be $1\frac{1}{4}$ " greater than line F-H on lower front and equals allowance for the two pleats.

II

Add a seam to upper and lower front, shaping upper front slightly round as shown.



DOUBLE BREASTED VEST WITH POINTS



The Regular Vest is used as a guide to draft the Double breasted Vest. However, an adjustment has to be made to the Frontpart before proceeding to style the Double breasted vest. The manipulation will produce a slightly shorter bridle and strap measure.

I

ADJUSTMENT FOR DOUBLE BREASTED VEST: Mark outline of Regular vest on clean sheet of paper, and label points 37-B-C, as indicated.

D from 37 is 4". Draw line D to B.

E from D is $\frac{3}{8}$ ". B, is the pivot-point. With aid of regular vest, pivot from B and shift pattern down to E, locating F. Re-mark outline of vest as shown by broken lines from F, thru E, and down to point 37. Cut out and mark new outline on clean sheet of paper, in preparation for drafting Double breasted vest.

II

DOUBLE BREASTED VEST: Label points 37-27 and 39 as shown.

A from 37, and B from 27 is $\frac{1}{2}$ ". Draw line A to B.

C from B is 5". Equals twice the desired button spacing.

D from C is $2\frac{1}{2}$ ". Draw line D to B.

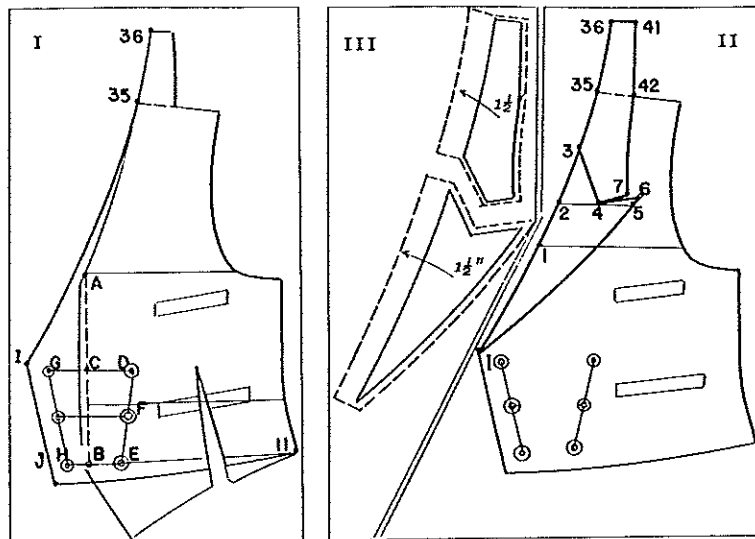
F from C is $2\frac{1}{2}$ ". Equals allowance for the Double breasted, and is same distance as from C to D.

G from F is 1". Equals button stand and allowance for seam.

H from 39 is 1". Draw line H to G, and re-shape bridle from above A, and to G as illustrated.

No change is required to Backpart of Vest. To draft with Collar and Lapel, refer to page 80.

**DOUBLE BREASTED VEST WITH
COLLAR AND LAPEL**

**I**

To draft the Double Breasted Vest, use outline of adjusted vest, described on page 79, diagram I as a guide.

Reduce front edge $\frac{1}{2}$ " as indicated by the dash line from A to B.

C from B is 5". Equals twice the desired button spacing.

D from C is $2\frac{1}{2}$ inches.

E from B is $1\frac{1}{4}$ ". Draw line D to E. F, is center between D and E.

G from C is $2\frac{1}{2}$ ". Equals same distance as from C to D (Allowance for the Double Breasted).

H from B is $1\frac{1}{4}$ ". Equals same distance as from B to E. Draw line G to H.

I from G, and J from H is 1". Equals the Button stand.

Add 1" to bottom, and shape slightly round from 11 to I-J line. Also re-shape Front and Bridle as shown.

The neck-piece, (35-36) will be added to collar, as illustrated in diagrams II and III. Cut outline as

indicated by heavy lines, and re-mark on clean sheet of paper.

II**LAPEL AND COLLAR:**

To draft the lapel and collar, label point 1 at the breastline as shown.

2 from 1 is $2\frac{1}{2}$ ". Draw a line out toward 5, parallel to Breastline.

3 from 2 is 3 inches.

4 from 2 is $2\frac{1}{2}$ ". Draw line 4 to 3.

5 from 2 is 4". Equals width of lapel.

6 from 5 is $\frac{1}{2}$ ". Shape rounding line from 1 to 6. Connect points 4 to 6.

7 from 4 is $1\frac{1}{2}$ ". Add neck-piece to collar, and then cut around outline of collar and lapel as illustrated in diagram III.

III

Illustrates addition made for seams, and $1\frac{1}{2}$ " for the facing added to the bridle.

THE DRESS VEST

Use the Regular Vest, (page 76) as a guide to draft the Dress Vest. Mark outline on clean sheet of paper and make the following changes:

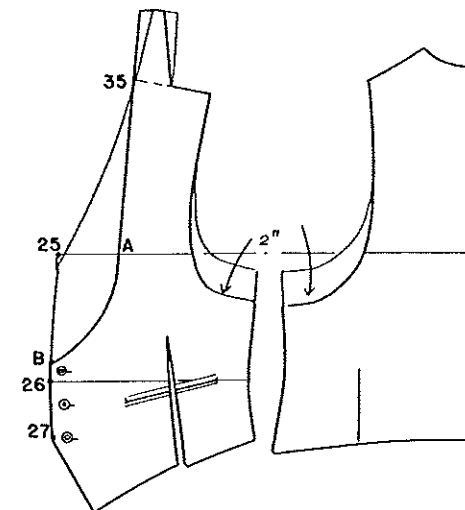
Label points 25-26-27-35, as shown.

A from 25 (Breastline) is $\frac{1}{6}$ Breast on division.

B from 26 (Waistline) is $\frac{1}{2}$ ". Draw line A to 35, and re-shape neck-piece as indicated.

With aid of french curve, shape from A to B as illustrated.

Armhole can be dropped 2" for a deeper armhole effect. Re-shape with aid of Regular vest.



SINGLE BREASTED VEST NOTCH COLLAR

Use the Regular Vest as a guide. Mark outline on clean sheet of paper and label points 35-42-37-28.

A from 35 is $\frac{1}{4}$ ". Equals seam reduced on breakline.

B from 37 is 1 inch.

C from B is $\frac{1}{4}$ ". Draw breakline A to C.

D, intersects breakline and breastline.

E from D is $\frac{1}{4}$ Breast on division plus 1".

F from 28 is $\frac{1}{4}$ Breast on division less 1". Draw line E to F, and continue toward H.

G from E is $2\frac{1}{2}$ inches.

H from G is $1\frac{1}{4}$ ". Shape lapel from C to H.

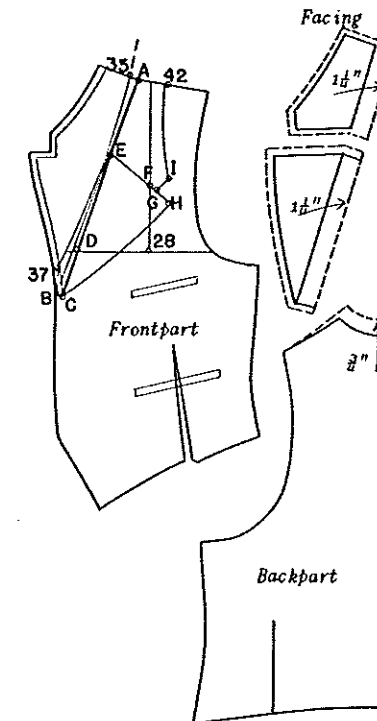
I from G is 1". Shape Collar to 42 as indicated.

Fold paper back on line A-C, (breakline) and with aid of tracer, trace outline of lapel and collar. Add seam to outer edge, then cut off excess. Lapel and collar remain in one piece on the body.

Eliminate the neck piece, and add $\frac{1}{2}$ " to the Backpart at neck run.

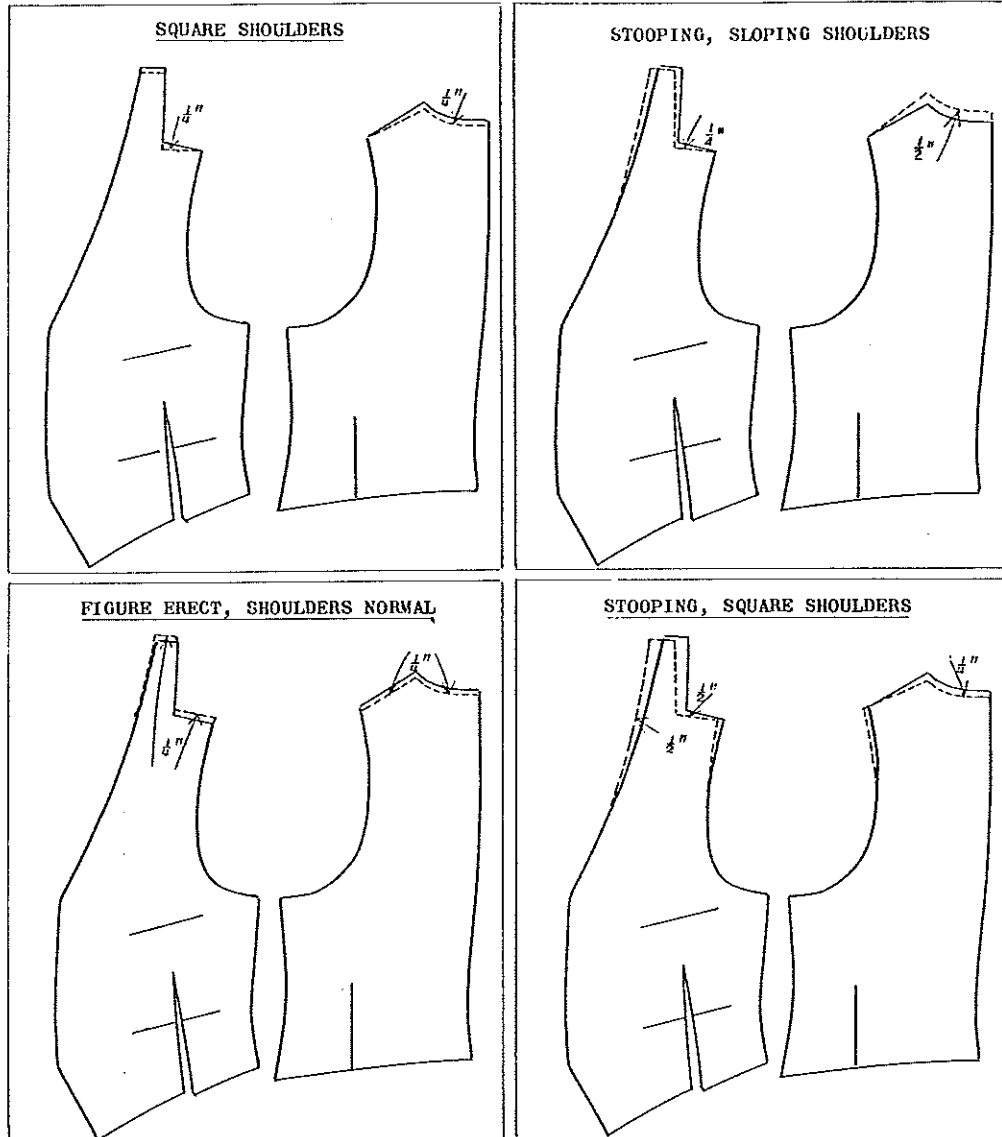
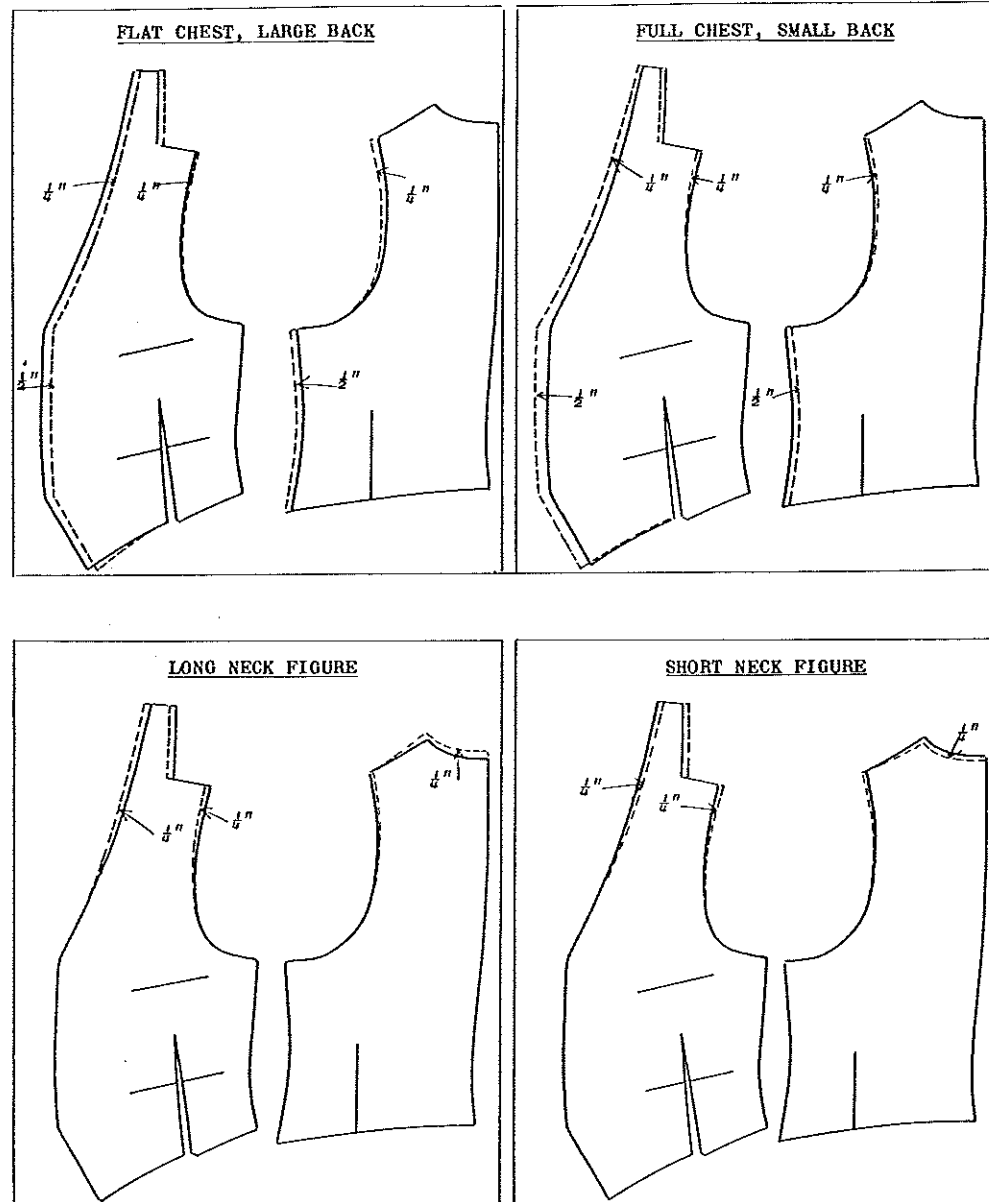
FACING: Separate the lapel and collar on line E-H, and add seam. Also add $1\frac{1}{4}$ " at breakline.

The Notch-lapel can also be drafted to the Sports vest, illustrated on page 78.



VEST ADJUSTMENTS FOR ATTITUDE

ADJUSTMENTS for attitude on the Vest pattern are applied in a like manner as those made on the Sack coat (See page 60). The dash lines will illustrate the required changes for attitude.

VEST ADJUSTMENTS FOR ATTITUDE

FULL DRESS EVENING COAT

THE length of the tails on the Full Dress Evening Coat, are about 2 inches below the bend of the knees.

THE drape effect gives the coat a broad shoulder, with fullness on the front. The lapels are peaked and finished quite wide. The sleeves and collar are drafted in the usual manner.

MEASUREMENTS:

Height	5'8"
Waist length	17½ inches
Breast	38 "
Waist	35 "
Seat	40 "
Sleeve inseam	17½ "
Full length	43 "

Drafting power is half Breast, 19.

A, is starting point, square out and down.

1 from A is 3½ inches.

2 from A is 17½". Equals Waist-line.

3 from 2 is 1½". Equals Fashionable Waist-line.

4 from A is 43½". Equals Full length, plus ½" for seam.

5 from 1 is 1/3 Breast on division. Square forward off points 5-3-2-4.

BACK:

6 from 3 is ½". Draw line 6 to 1. 7 intersects the Breast line.

8 from 6 is ¼". Draw line 8 to 7, and continue to waistline.

9 falls on the Waistline.

10 from 4 is the same distance as 9 to 2; Draw line 10 to 9, to complete run of Center-back.

11 from 7 is 1/4 Breast on division.

12 from 11 is 1/8 Breast on division.

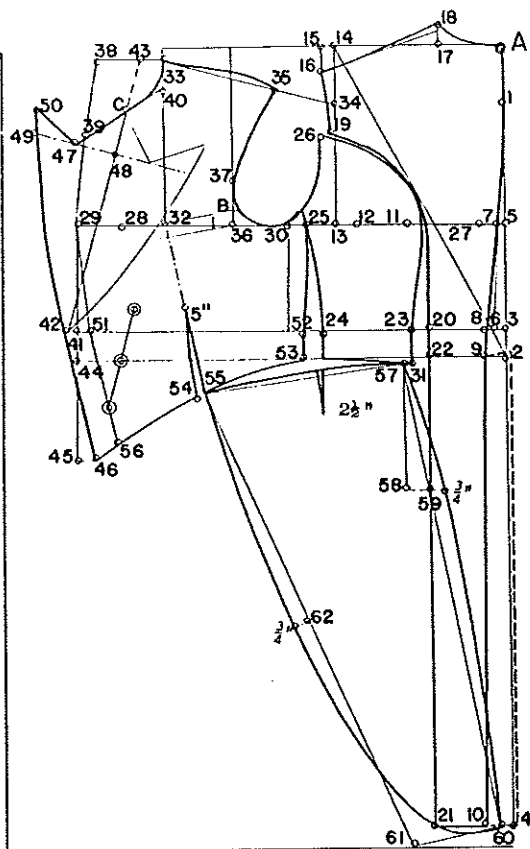
13 from 12 is 1". Square up to top.

14 falls on the top line.

15 from 14 is ¾". Square down toward 16.

16 from 15 is 1½ inches.

17 from A is 1/8 Breast on division plus 1". Square up toward 18.



18 from 17 is 1". Shape the neck-run.

19 from 13 is 1/4 Breast on division, and ¼" from straight line. Shape armhole, 19 to 16, and shoulder-run, 16 to 18.

20 from 8 is 1/8 Waist on division plus ½ inch.

21 from 10 is same distance as 20 to 8; Draw line 21 to 20.

22 falls on the waistline.

Draw a guide line from 2 to 14 as indicated. With aid of french curve, shape backpart from 20, touching guide line above breastline, and to 19 as illustrated.

Add 1¼" from 9 to 2 and 10 to 4. Equals allowance for Center-back-vent.

Then with aid of tracer, trace outline of backpart on clean sheet of paper.

SIDE BODY:

23 from 20 is 1 inch.

24 from 23 is 1/4 Waist on division plus ½ inch.

25 from 13 is 1/12th Breast on division.

26 from 19 is ¾ inch.

27 from 7 is ¾". Equals allowance for the drape effect.

28 from 27 is half the Full Breast, 19".

29 from 28 is 2½ inches.

30 is center between 7 and 29. Square down to Fashionable-waistline. Equals the Side-center-line.

Shape armhole, using points 26 and 30 as a guide.

31 is ½" below waistline, and in line with 23. Shape side-body using points 31-23-guide line, (2-14) and 26 as a guide.

Shape side seam from armhole, to 25-24 and down to waistline. Also shape run of side body from waistline to 31 as indicated.

FRONT: Extend lines A-3-2, forward.

32 from 29 is 1/4 Breast on division. Square up to top line, A.

33 is ¾" below top line.

34 from 13 is 1/3 Breast on division. Draw line 33 to 34.

35 from 33 is ½" less than Back-shoulder run, 16-18. Shape run of shoulder.

36 from 30 is 1/8 Breast on division plus ½". Square up to top line.

37 from 36 is 1/8 Breast on division. Draw line 37 to 35. Then shape armhole as illustrated in diagram.

B from 36 is 1/8". Equals Front-notch.

38 from 33 is 1/6 Breast on division plus ½". Connect points 38 and 29.

39 from 38 is 1/6 Breast on division plus ¾ inch.

40 from 33 is 1/8 Breast on division less 1". Draw line 39 to 40.

41 is squared down from 29, and falls on Fashionable waistline.

42 from 41 is ½ inch.

43 from 33 is 1½". Draw breakline, 43 to 42.

C, falls on 39-40 line. Shape run of gorge to 33 as indicated.

Continue line 29-41 down toward 45.

44 intersects the Waistline.

45 from 44 is 1/4 Breast on division plus ½ inch.

46 from 45 is 1". Draw line 46 to 42.

47 from C is 3 inches.

48 is located by laying long arm of square on breakline, with short arm resting on 47. Draw line toward 49.

49 from 48 is 3¾". Shape lapel from 42 to 49, and continue line toward 60.

50 from 49 is 1½". Draw line 50 to 47.

51 from 42 is 1½ inches.

52 from 24 is 1". Shape side seam from armhole, 52, and down to waistline.

53 falls on waistline. Draw a curved line from 53 to 46 as indicated.

54 is center between 46 and 53.

55 from 54 is 3/8". Draw line 55 to 32. Front dart is 5 inches long.

56 from 46 is 1½". Draw line 56 to 51, establishing New Front-center line.

The bottom button is 2 inches above 56. From this point, draw a line parallel to breakline; then space buttons 3 inches apart as indicated.

SKIRT:

57 from 31 is ¼". Square down toward 58.

58 from 57 is 7". Equals the Seat-line. Square back toward 59.

59 from 58 is 1½". Connect points 57 to 59, and continue line down toward bottom of backpart.

60 from 57 is same length as 22 to 21 on backpart. Lay long arm of square on 57-60 line with point resting on 60, and square out toward 61.

61 from 60 is 1/4 Breast on division. Draw line 61 to 55, 55 to 57. Add 3/8" round, and re-shape from 57 to 55. Also take out ½" dart at waistline as indicated.

62 is center between 61 and 55. Add ¾" round at 62 and re-shape from 60 to 55 as indicated.

Add ¾" round at 59, and shape skirt from 57 to 60 as illustrated.

ONE BUTTON FROCK COAT

THE morning One Button Frock Coat, is correct for formal or semi formal day wear. It is appropriate for weddings taking place in the morning, or in the afternoon up to 6:00 PM.

NO change in attire is necessary for the evening when a reception follows the ceremony.

THE Frock Coat can also be worn for funerals, state functions and garden parties. It can also be worn all day on a Sunday for such occasions as church services or evening concerts.

THE backpart and side-body of the Frock Coat is drafted in the same manner as the, Full Dress Evening Coat. (Refer to page 86-87) Draft the Full Dress, up to and including points 41. Then continue the Frock-coat draft as outlined below. The measurements are the same as the Full Dress Coat.

FRONTPART:

42 from 41 is 1 inch.

43 from 33 is $1\frac{1}{2}$ ". Draw breakline, 43 to 42.

C, falls on the gorge run.

Continue line 29-41 down toward 45.

44 falls on the Waistline.

45 from 44 is $\frac{1}{8}$ Breast on division.

46 from 24 is 1". D, falls on waistline, in line with 46. Shape side-seam into armhole, using points D-46-25 as a guide. Then shape Bottom-run from D to 45.

47 from C is $3\frac{1}{2}$ ".

48 falls on the breakline.

49 from 48 is 4". Connect points 45-42-49.

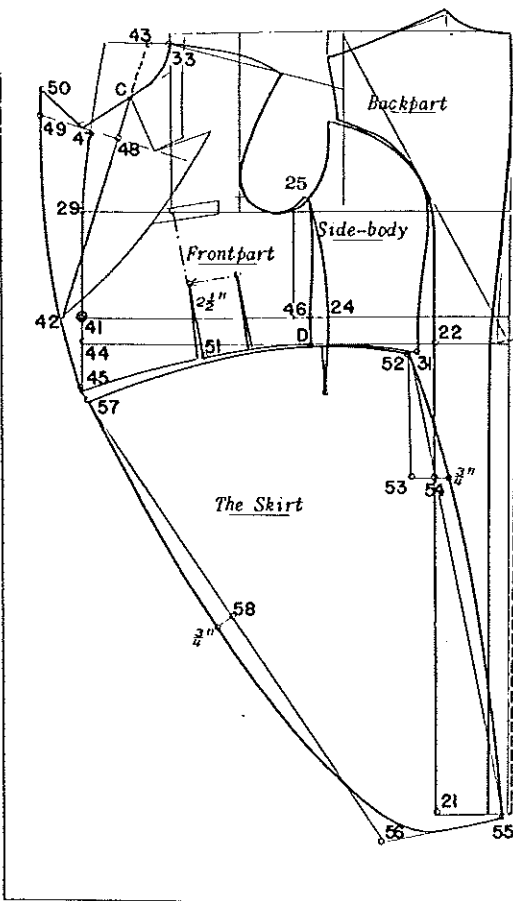
50 from 49 is $1\frac{1}{2}$ ". Draw line 50 to 47.

51 is center between 45 and D. Cut $\frac{1}{4}$ " out of each dart. Darts are spaced $2\frac{1}{2}$ " apart, and 5" long.

SKIRT:

52 from 31 is $\frac{1}{4}$ ". Square down toward 53.

53 from 52 is 7". Square back.



54 from 53 is $1\frac{1}{4}$ ". Connect points 52 to 54, and continue line to bottom.

55 from 52 is same length as 22 to 21 on backpart. Square out toward 56.

56 from 55 is $\frac{1}{3}$ Breast on division. Draw line 56 to 45.

57 from 45 is $\frac{3}{8}$ ". Draw a rounding line from 52 to 57 as indicated. Then add $\frac{3}{8}$ " round at 54, and shape from 52 to 55. Also take out $\frac{1}{2}$ " dart at waist of Skirt as illustrated.

58 is center between 57 and 56. Add $\frac{3}{8}$ " round at 58, then shape as indicated using points 57 to 55 as a guide.

SUGGESTED ACTIVITIES

1. Draft the Sports Vest, (p-78) with notch collar, on page 81.
2. Draft a Full Stout Vest.
3. Design a suit (coat, pants and vest) for some individual; then make necessary allowances for outlets, etc. Also make facing and trimmings.