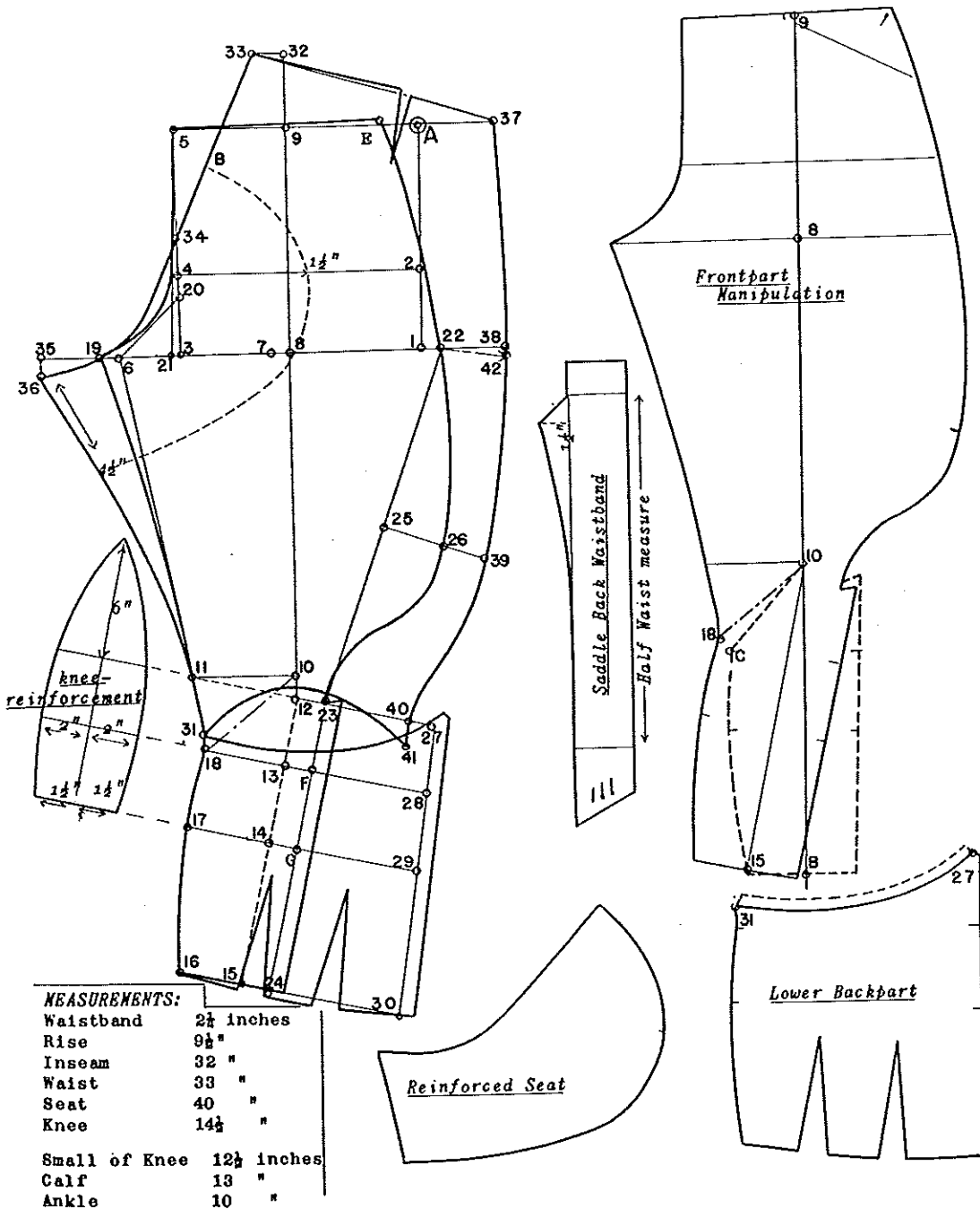


Riding Breeches



RIDING BREECHES

Drafting power is half Seat, 20.

FRONTPART:

- A, is starting point, square out, and down toward 1.
 1 from A, is length of Rise.
 2 from 1 is 1/6 Seat on division. Square out from points 1 and 2.
 3 from 1 is 1/2 Seat on division plus ½". Square up to waistline.
 4 intersects Seat line.
 5 intersects waistline.
 6 from 3 is 1/8 Seat on division.
 7 is center between 1 and 6.
 8 from 7 is 3/4 inch.
 9 from A, is same as 1 to 8. Draw line 8 to 9, and continue toward 10.
 10 from 8 is half inseam less 2" (14"). Square out toward 11.
 11 from 10 is 1/4th Knee measure plus ½" (4½").
 12 from 10 is 1". Draw dash line 12 to 11. Lay short arm of square on 12-11 line with point resting on 12, and draw dash-line down toward 15;
 13 from 12 is 2½". (Small-of-Knee)
 14 from 13 is 3½". (Calf line)
 15 from 8 is Inseam measure, less 4½". Continue points 12, 13, 14 and 15 forward and back, squaring off of dash line.
 16 from 15 is 1/4th Bottom (2½").
 17 from 14 is 1/4th Calf (3½").
 18 from 13 is 1/4th Small-of-Knee (3½"). Connect points 16-17-18-11-6;
 19 from 6 is ½". Shape inside-seam 19 to 16 as illustrated.
 20 from 3 is 1/8 Seat on division. Draw line 6 to 20.
 21 from 3 is ¼". Draw line 21 to 5. Shape front run to 19 as indicated.
 E, from 5 is 1/2 Waist on division.
 22 from 1 is 3/4 inch.
 23 from 12 is 1½".
 24 from 15 is 1½". Draw line 24 to 23, 23 to 22.
 F, falls on Small-of-Knee line.
 G, falls on Calf line.
 25 is center between 23 and 22. Square out toward 26.
 26 from 25 is 2½". Using points E-22-26-23-24 as a guide, shape run of outseam. Trace outline of Frontpart on clean sheet of paper.

LOWER BACKPART:

- 27 is located by applying full Knee measure plus 1½", from 11 to 23, plus distance from 11 to 27 (Apply distance from 11 to 23 which is 5½", to point 11, and measure back 14½" for full knee measure, plus 1½" for makeup).
 28 is located by applying full Small-of-Knee from F to 18, 18 to 28 plus 1½".
 29 is located by applying full Calf measure from G to 17, 17 to 29 plus 1½". Connect points 27 to 29, and extend to Ankle line.
 30 intersects Ankle line. Distance at Ankle line from 24 to 16 plus 16 to 30 equals Ankle measure plus 1½"--Remainder is taken out of the two darts--Divide Lower backpart into three parts and take 1" out of each dart for a 10" Ankle measure. Shape as indicated.
 31 from 18 is ½". Shape a rounding line, 31 to 27 as indicated.

UPPER BACKPART:

- 32 from 9 is 3".
 33 from 32 is 1/16th Waist on division.
 34 from 4 is 1½".
 35 from 19 is 1/8 Seat on division. Square down toward 36.
 36 from 35 is 1". Shape run of center back using points 33-34-19-36 as a guide. Shape inseam, 31 to 36.
 37 from 33 is 1/2 Waist on division plus 2½". Draw line 33 to 37.
 38 from 22 is 3".
 39 from 26 is 1½".
 40 from 27 is 1".
 41 from 40 is 1". Shape outseam using points 37-38-39-40-41 as a guide. Shape rounding line using points 41, midway of 12 and 10 and 31 as a guide.
 42 from 37 is same as 22 to E--Rise notch
 Distance from 41 to 37 equals same as 23 to E, on frontpart.
 41 to 31 equals 27-31, on Lower backpart.
 Mark all corresponding notches.
 For Zipper opening, add ½" on frontpart from 23-24, and Lower backpart from 27 to 30.

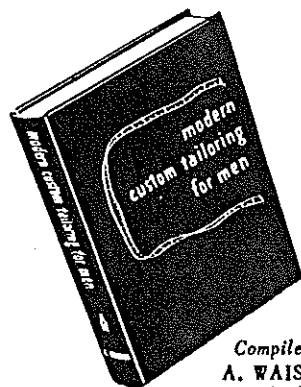
(continued on next page)

• You Need This Book

modern custom tailoring for men

A MASTER COURSE ON TAILORING & REPAIRING

A Complete Self-instruction Course



Compiled by
A. WAISMAN
And
MASTER DESIGNER

A complete section is devoted to busheling and alterations. In it you will see how to make alterations of the sleeves, collars, shoulders, armholes and body of the coat as well as how to make alterations on vest or trousers.

You learn new busheling or alteration procedures and short cuts in this great new book. You'll be able to do more work in less time—make more money, faster!

A real "friend" for the Tailoring student—and the Old Master will want a copy on hand, too, as a reference volume.

● This Book on Tailoring contains an exclusive Course on how to make Trousers, Vest, Coats and how to repair and alter them.

It is a course in Tailoring that will save you years of apprenticeship. This is the only book of its kind published that has this valuable information on Tailoring that you could never get before.

This Tailoring Book contains over 125 illustrations in pictures, each one accurate and easy to follow together with over 170 pages containing instructions that go along with these pictures.

The book is in loose-leaf form, encased in a durable cover, printed on white paper.

● It shows you the Sewing up and assembling of each garment step by step. This course is the result of a life time experience in the Tailoring business and supplies the knowledge you must have to make more money, to attract more customers—to BUILD A BIGGER BUSINESS—to check back on yourself to see that you are doing Tailoring or repair work right.

The subject matter in this course in Tailoring has been prepared to serve the Merchant Tailor as well as the small Cleaner and dyer or Valet who does Tailoring repairs along with his pressing business. And by the way, it also contains instructions for Pressing correctly too.

Just one new idea you can get out of this book will bring you back its price many times over.

Write at once for circular giving complete information, low cost, etc., of this great book.

THE MASTER DESIGNER
343 S. Dearborn Street
CHICAGO, ILLINOIS 60604

(continued from page 31)

REINFORCED SEAT:

B, is center between Seat line and 33. Shape as indicated and trace outline on clean sheet of paper.

REINFORCED KNEE:

Extend Knee, Small-of-Knee and Calf line. Shape as illustrated.

LOWER BACKPART:

Add a seam from 27 to 31; Also add a seam on Upper backpart from 31 to 41. All other seams are allowed for in draft

WAISTBAND is finished $2\frac{1}{2}$ " wide at front. Add $1\frac{1}{2}$ " at center back as indicated $2\frac{1}{2}$ " for extension; $1\frac{1}{2}$ " at back for outlet. Shape as illustrated.

FRONTPART MANIPULATION required for Whipcord or Striped materials:

Label points 8-9-10-15-18 as indicated. Extend 9-8-10 line to Ankle line toward B. 10 is pivot point. Draw line 18 to 10. Pivot from 10 and shift pattern from 15 to B, locating C. Re-mark as indicated by dash lines. Dart at knee will be stated, and covered by reinforced knee.

MEASUREMENTS FOR BREECHES:

TAKE the outside seam length and the inside seam length in the same manner as for regular trousers. (Outline, in draft provides for proper Ankle length). The following measurements should be taken easy so as not to create too tight a fit thru the trouser leg. May be taken over regular trouser to insure sufficient ease.

1-KNEE MEASURE:

Taken around largest part, above knee-cap.

2-SMALL OF KNEE:

Taken around smallest part, below knee-cap.

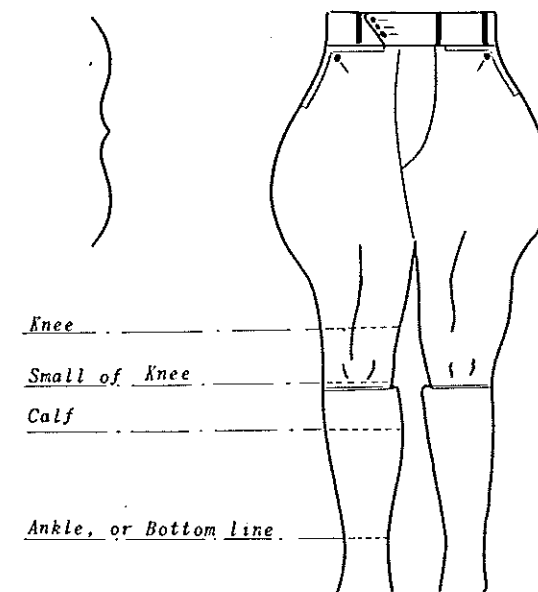
3-CALF:

Taken around heaviest part, at calf.

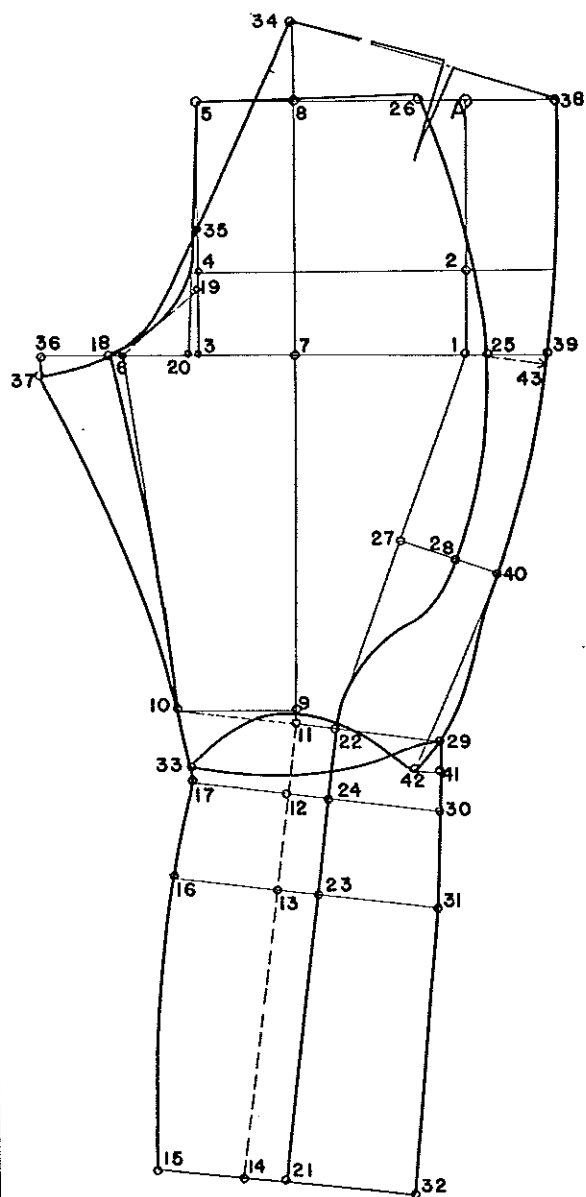
4-ANKLE:

Taken around smallest part, above ankle-bone.

BOTH Seat and Knees are reinforced with double thickness of fabric, or calfskin. Front pocket facings should be cut, to open at the top, to button down.



Jodhpurs



MEASUREMENTS:

Waistband	2½ inches
Rise	9½"
Inseam	32"
Waist	33"
Seat	40"
Knee	14½"
Small of knee	13"
Calf	13½"
Bottom	13"

Drafting power is half Seat measure, 20.

FRONTPART:

A, is starting point, square out, and down toward 1.

1 from A, is length of Rise.

2 from 1 is 1/6 Seat on division. Square out from points 1 and 2.

3 from 1 is 1/2 Seat on division plus ½". Square up to Waistline.

4 intersects Waistline.

5 intersects Waistline.

6 from 3 is 1/8 Seat on division.

LOWER BACKPART:

29 is located by applying full knee measure from 22 to 10 and 10 to 29 plus 1½" for makeup.

30 is located by applying full Small-of-Knee measure from 24 to 17 and 17 to 30 plus 1½".

31 is located by applying full Calf measure from 23 to 16 and 16 to 31 plus 1½".

32 is located by applying full Bottom measure, 21 to 15 and 15 to 32 plus 1½". Connect points 29-30-31-32.

33 from 17 is ½". Shape a rounding line from 33 to 29 as illustrated.

UPPER BACKPART:

Extend 7-8 line toward 34.

34 from 8 is 3".

35 from 4 is 1½".

36 from 18 is 1/8 Seat on division. Square down toward 37.

37 from 36 is 1". Shape inseam from 33-10 and 37. Shape center back run using points 34-35-18-37 as a guide.

38 from 34 is 1/2 Waist on division plus 2½". Draw line 34 to 38.

39 from 25 is 2½".

40 from 28 is 1½".

41 from 29 is 1½". Square out toward 42.

42 from 41 is 1". Draw rounding line using points 42-9-33 as a guide.

Shape outside seam using points 38-39-40-29-42 as a guide.

43 from 38 is same distance as 25 to 26 on frontpart--Rise notch--

Add a seam from 42 to 33 on upper back-part; add a seam from 29 to 33 on lower-backpart. All other seams are allowed for in the draft. Add out-

lets, turnup, etc.

Outseam on Front from 22 to 26 sews to outseam on Back from 42 to 38, and must measure same distance.

Run, from 42 to 33 on upper Back sews to lower Back, 29 to 33, and must measure same distance.

Take ¼" out of Back dart.

7 is center between 6 and 1. Square up toward 8.

8 intersects the waistline. Extend 8-7 line down toward 9.

9 from 7 is half inseam less 2" (14"). Square out toward 10.

10 from 9 is 1/4th Knee plus ½" (4½").

11 from 9 is ½". Draw line 11 to 10. Lay short arm of square on 11-10 line with point resting on 11, and square down toward 14.

12 from 11 is 2½" (Small-of-Knee).

13 from 12 is 3½" (Calf).

14 from 7 is Inseam measure. Lay long arm of square on 14-11 line with point resting on 14, and square out toward 15.

15 from 14 is 1/4th Bottom measure (3½").

16 from 13 is 1/4th Calf measure (3½").

17 from 12 is 1/4th Small-of-Knee measure (3½"). Extend lines 12-17, 13-16, 14-15 forward and back. Connect points 15-16-17-10-6.

18 from 6 is ½". Shape inside seam as indicated.

19 from 3 is 1/8 Seat on division. Draw guide line 19 to 6.

20 from 3 is ½". Draw line 20 to 5, and shape Front-run.

21 from 14 is 1½";

22 from 11 is 1½"; draw line 22 to 21.

23 falls on Calf line.

24 falls on Small-of-knee line.

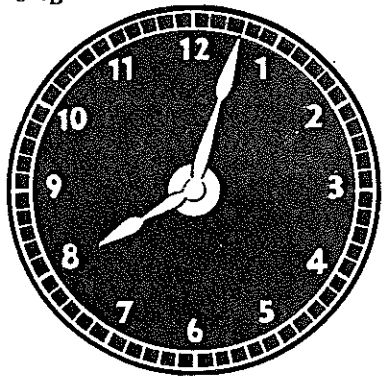
Draw guide line 22 to 1.

25 from 1 is ¾".

26 from 5 is 1/2 Waist on division.

27 is center between 22 and 1. Square out toward 28.

28 from 27 is 2½". Shape outside seam using points 26-25-28 as a guide.



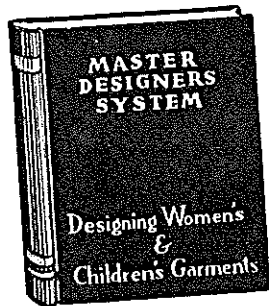
Modern Method of Women's & Children's GARMENT DESIGN

-measurement charts
- -pattern drafting

**This Book Gives You Ideas
on Designing, Cutting & Grading**

● **"THE MASTER SYSTEM WAY" INSTRUCTS YOU IN DESIGNING AND CUTTING GARMENTS!**

At last: Here's an authentic Book that all manufacturers of Women's or Children's Apparel, Merchant Tailors, Designers, Cutters, Furriers or any Student, man or woman, can now easily familiarize themselves with - Women's Garment Designing, Pattern Making, Cutting and Grading. Also contains modern Ladies' Slacks and Children's Garments.



● **MODERN METHOD OF WOMEN'S & CHILDREN'S GARMENT DESIGNING**

This edition has been prepared for a home study course, for school use, or for a general source of information. The methods have been simplified in such a manner that instead of taking numerous body measurements to draft a bodice foundation for the average figure three or four would suffice.

It is the "Master Designer's" 25 years of practical experience compiled into a self-instruction book.

OVER 160 PAGES, over 145 illustrations. It now contains GRADING tool The book is in loose-leaf form, encased in a durable cover, printed on white paper. The authors of these works are A. Gebbia and the "Master Designer". The regular drafting square is used.

● **IS WRITTEN TO FIT ANYONE WORKING IN THE TRADE NOW AS WELL AS THE STUDENT**

Any man or woman at the present time that is connected with the Ladies' or Children's Garment Industry in any way at all or student as well, should purchase this book by all means at once.

Merchant Tailors that are in the men's Tailoring business now, can now add this book to their library for handy reference and quick guidance.

FOR THE SCHOLAR WHO WANTS TO GET INSTRUCTION IN DESIGNING, DRAFTING AND CUTTING PATTERNS here is your opportunity to obtain excellent reference material. You will be instructed in drafting, designing and cutting patterns for Ladies' Suits, Skirts, Dresses, Top-coats, etc., as well as Children's Garments to the different sizes. Use in your spare time, right in your own home - wonderful as a hobby or posttime.

The instructions it contains will be worth many, many times the price paid by anyone that is sincere and really wants to apply himself. This system is the Authors' life work.

Just one new idea you can get out of this book will bring you back its price many times over.

Write at once for circular giving complete information, low cost, etc., of this great book.

MASTER DESIGNER

343 SOUTH DEARBORN STREET
CHICAGO, ILLINOIS 60604

Sack Coats

FOR best results, it is not only important to take the necessary measurements, but they must also be taken with accuracy. When measuring a customer, it is good practice to observe the coat he may be wearing.

MEASUREMENTS should always be taken in the following order. Before removing coat, stand behind figure and proceed as follows:

WAIST LENGTH:

Measure from the Socket bone (where the collar seam joins the coat), down to the smallest part of the back.

FULL LENGTH:

Taken from Socket bone, down to desired length.

WIDTH of BACK:

Taken from Center back seam, over largest part of back, to seam of armhole. Now remove coat:

BREAST MEASURE:

Taken over largest part of chest and back, *medium easy*.

WAIST and SEAT measures are taken in usual manner as described in trouser section.

SLEEVE INSEAM:

Should be taken with a square, from the arm-pit, down to wrist, or desired length.

NOTE: The breast and seat measures should be taken very easy for the *slim figure* and *medium easy* for the *fleshy figure*.

OBSERVE the ATTITUDE: Is the figure slightly stooped, erect, right or left shoulder low, full chest, prominent seat? Always mention degree of disproportion (See Adjustments for Attitude, elsewhere in this book).

DRAFTING BY HEIGHT:

TO establish the proportionate shoulder height, waist length, seat length and full length for the average height which is 5 feet 8 inches, or a total of 68 inches, the following rules will be employed to obtain these, and other necessary measurements.

SHOULDER HEIGHT: $3\frac{1}{2}$ inches for the standard height 5 feet 8 inches: Add or take away $\frac{1}{8}$ inch under, or over the standard (Slightly different in Table of Proportions).

WAIST LENGTH: $\frac{1}{4}$ th of the entire height plus $\frac{1}{2}$ inch ($17\frac{1}{2}$ ").

SEAT LENGTH: $\frac{1}{8}$ th of entire height less $1\frac{1}{2}$ inches (7").

FULL LENGTH: Half of entire height less $3\frac{1}{2}$ " ($30\frac{1}{2}$ ").

DEPTH OF SCYE: Combination of shoulder height, plus $\frac{1}{3}$ rd Breast measure on division of square.

BLADE MEASURE: Takes its proportions from the Breast measure.

SLEEVE INSEAM: $\frac{1}{4}$ th of entire height plus $\frac{1}{2}$ inch ($17\frac{1}{2}$ ").

WAIST MEASURE: 2 inches larger than Trouser waist measure.

BREAST MEASURE: 2 inches smaller than Seat measure.

YOUNG MEN'S BASIC SACK COAT

IN using Tailor's Square, care must be taken in forming a perfect right angle. This procedure will avoid mistakes that would normally show up upon completion of draft. Be sure to label all points as progression is made.

NOW to elaborate on the first step, on which the system of designing sack coats is mainly based.

MEASUREMENTS:

Height	5'8"
Waist length	17½ inches
Full length	30½ "
Breast	38 "
Waist	35 "
Seat	40 "

Drafting power is half breast measure, 19.

A, is starting point; drafting paper is laid parallel to length of table and from right to left, square out and down forming a right angle; label A, at point of square.

1 from A is 3½". Equals shoulder-height.

2 from A, is Waist length (17½").

3 from A, is Full length plus ½" for seam (30½").

4 from 2 is 7" (Seat-line).

5 from 1 is 1/3 Breast on division (Look for 19 on 3rd division of square, and apply this amount from 1 to 5).

Continue top line A, forward. Square out from points 5-2-4-3 (Lay long arm of square on construction line with point resting on 5, and draw line forward. Repeat at other points, establishing right angle lines).

CENTER BACK RUN:

6 from 2 is ½". Draw line 6 to 1, and continue to bottom line.

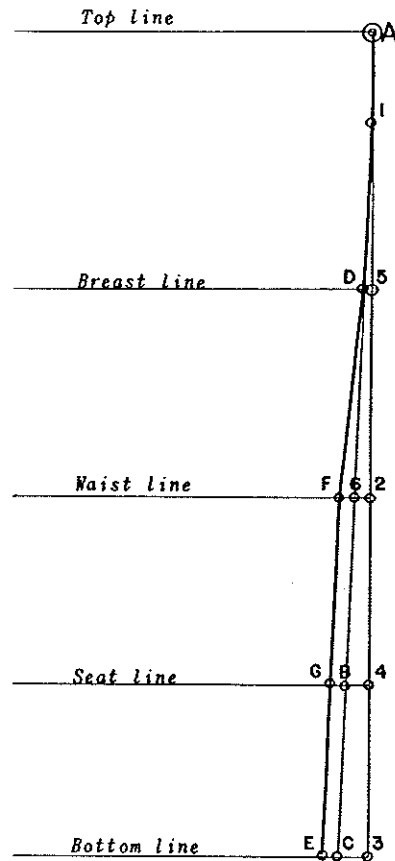
B, intersects Seat line.

C, intersects Bottom line.

D, intersects the Breast line.

E from C, is ½".

F from 6 is ½"; draw line E to F, F to D. G, falls on Seat line. With aid of curve-stick, shape run of Center back, A-1-D-F-G-E, as illustrated.



(continued on next page)

(continued from page 38)

BACKPART:

7 from D, is 1/4 Breast on division (4½").

8 from 7 is 1/8 Breast on division (2½").

9 from 8 is 3/4 inch. Square up to top line (Lay long arm of square on Breast line with point resting on 9, and square up).

H, intersects top line.

10 from H, is 2". Square down toward 11. (Lay long arm of square on top line with point resting on 10).

11 from 10 is 1½ inches.

12 from A, is 1/8 Breast on division, plus 1" (3½"). Square up toward 13:

13 from 12 is 7/8". With aid of french curve, shape neck run from A to 13.

Draw line from 11, to ¼" below 13. With aid of curve stick, shape shoulder run from 11 to 13 as indicated.

14 from 9 is 1/8 Breast on division. Square out toward I and J.

I from 14 is ¼". With aid of curve-stick, shape arm scye, I to 11.

J from I, is ¼ inch.

15 from G, is 1/3 Seat on division plus ¼" (About 7". Look for half of Seat measure which is 20, on the 3rd division of square, and add ¼") Draw line 8 to 15, and continue down toward 16.)

M, intersects the Waistline.

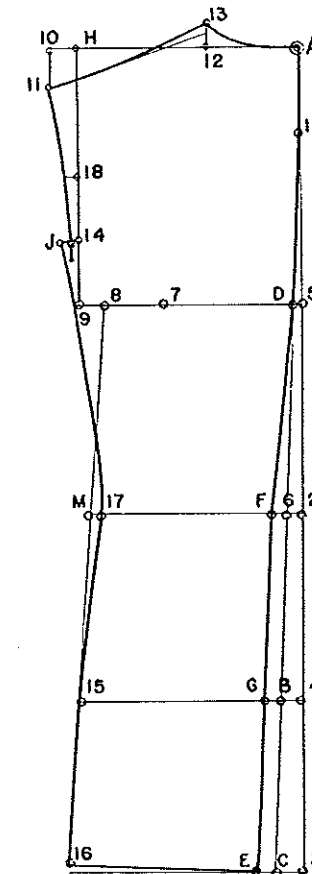
16 is located by laying long arm of square on E-F line with point resting on E; Square forward. (16 is also ¼" above bottom line in this case).

17 from M, is ½". With aid of curve-stick, shape side seam from 17 to J, 17 to 15 and down to 16 as shown.

18 from 9 is 1/4 Breast on division... Back notch...

With aid of tracing wheel, trace outline of backpart (heavy line) and prepare to draft Frontpart of coat.

(continued on next page)



YOUNG MEN'S BASIC SACK COAT

(continued from page 39)

FRONTPART:

Continue lines A-5-2-4-3 forward.

19 from D, is Half of Full Breast measure. (19")

20 from 19 is $2\frac{1}{2}$ ". (Standard allowance for seams and ease).

21 is located by squaring down to waistline from 20.

22 is center between 20 and D. Square down to waistline.

23 falls on Waistline.

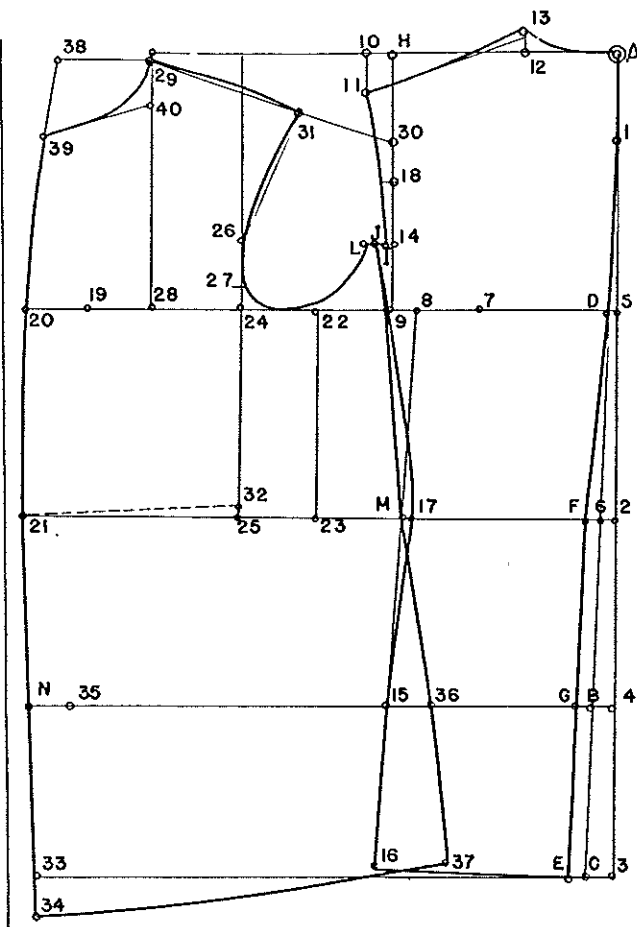
24 from 22 is $\frac{1}{8}$ Breast on division plus $\frac{1}{2}$ ". ($2\frac{7}{8}$ ") Square up to top line.

25 is located by squaring down to waistline from 24.

26 from 24 is $\frac{1}{8}$ Breast on division.27 from 24 is $\frac{1}{8}$ " (Front-notch).28 from 20 is $\frac{1}{4}$ Breast on division. Square up to top line.29 is $\frac{1}{4}$ inch below top line.30 from 9 is $\frac{1}{3}$ Breast on division. Draw guide line for shoulder run, 30 to 29.31 from 29 is $\frac{1}{2}$ " less than 11 to 13, on back shoulder run ($5\frac{5}{8}$ "). Draw guide line 31-26.L from J is $\frac{1}{4}$ ". With aid of french curve shape arm hole from L, to breast line, 31 to 26, and 26 to breast line.32 from 25 is $\frac{3}{8}$ ". Draw dash line from 32 to 21.

33 is located by squaring down to bottom line off 32-21 line. (Lay short arm of square on 32-21 line with point resting on 21, and square down.)

N, falls on Seat line.

34 from 33 is $\frac{1}{12}$ th Breast on division. Square back 2".35 from N, is $1\frac{3}{4}$ " (Makeup and ease required at Seat line).36 from 35 is $\frac{2}{3}$ rd's Seat on division. Draw line M to 36 and continue to bottom line.

37 from M, is same as 17 to 16 on backpart. With aid of curve stick, shape side seam from J to M, M to 37 as indicated.

Shape run of bottom from 37 to 34.

38 from 29 is $\frac{1}{6}$ Breast on division plus $\frac{3}{8}$ ". ($3\frac{1}{2}$ "). With aid of curve stick shape from 20 to 38 as indicated. Points 38-39-20-21-33-34 represent the, *Center Front line*.39 from 38 is $\frac{1}{6}$ Breast on division.40 from 29 is $\frac{1}{8}$ Breast on division, less $\frac{1}{4}$ ". Shape run of gorge from 29 to 39 as indicated.

Trace outline of Frontpart and prepare for following procedure as outlined on next page.

MANIPULATION FOR SMALL HIP EFFECT

-DARTS AND POCKETS-

MARK outline of Frontpart on clean sheet of paper and label points I-28-24-22-32-21 as indicated.

SIDE POCKET:

Lay short arm of square on 21-32 line with point resting on 32, and square down toward 41.

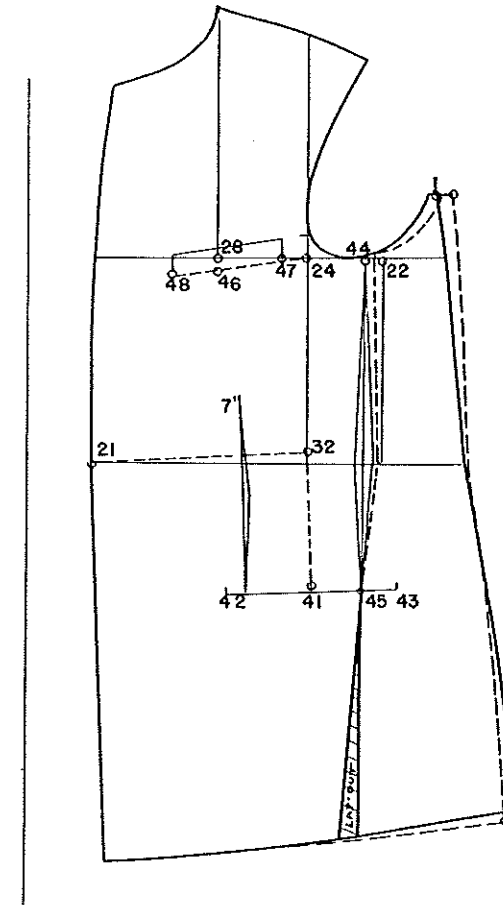
41 from 24 is 12" (About $\frac{2}{3}$ of sleeve inseam). Lay long arm of square on 32-41 line with point resting on 41, and square forward and back for Side pocket line.

42 from 41 is 3":

43 from 42 is 6" (Pocket opening).

UNDER ARM DART:44 from 22 is $\frac{1}{2}$ ". Square down to pocket line.45 intersects pocket line. Measure $\frac{1}{4}$ " on each side of straight line at waistline, and re-shape from 44 to 45 as indicated.**MANIPULATION for SMALL HIP:**45, is pivot point. Open pattern $\frac{1}{2}$ " at 44, by pivoting from 45. Re-shape as shown by dash lines. Side pocket should run parallel to New bottom line.Front dart is $\frac{7}{8}$ " from 42, and squared up off side pocket line.**OUTSIDE BREAST POCKET:**46 from 28 is $\frac{1}{2}$ ". Draw line 24 to 46 and extend toward 48.

47 from 24 is 1 inch.

48 from 47 is $4\frac{1}{2}$ " for length of Breast-pocket. Width is finished $\frac{7}{8}$ " (Breast pocket is $\frac{1}{4}$ " longer for the Double breasted coat).

DIAGRAMS to follow, will illustrate application of styles to basic sack coat. The length, or depth of the gorge run is more or less flexible and can be drafted to suit individual. Before attempting to work out individual ideas, it is advisable for the reader to fully comprehend the basic steps that govern different style effects.

3 BUTTON SINGLE BREASTED NOTCH LAPEL

How to draft a 3 Button Single breasted, using basic Front-part (size 38 Breast) as a guide.

I

Mark outline of basic Front-part and label points as indicated.

II

A, is a point in line with Side pocket.

B from A, is $8\frac{1}{2}$ " (Equals twice the amount of button spacing, $4\frac{1}{4}$ " in this case).

C from B is 1 inch.

D from A is $\frac{3}{8}$ ". Draw line C to D, and shape $\frac{1}{2}$ " above 34.

E, is center between A and B.
F from 29 is $1\frac{1}{4}$ " (Width of collar stand). Draw line F to C, establishing the *Break-line*.

G falls on gorge line. Extend 40-39 line toward I.

H from G is $2\frac{1}{2}$ " (Collar-notch).

I from H is $1\frac{1}{4}$ ". With aid of curve stick, draw line C to I. Add $\frac{1}{4}$ " seam to *Front edge*.

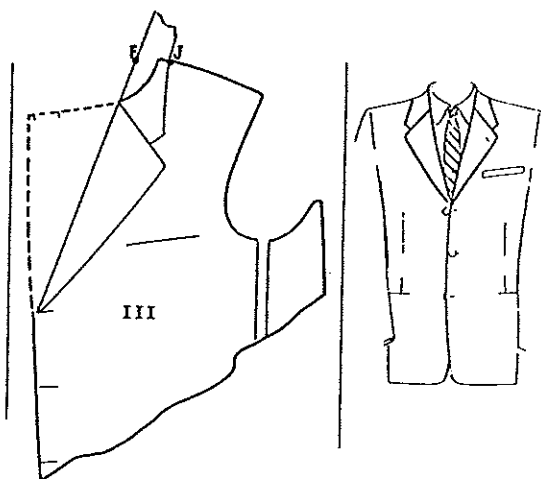
FINISHED SHAPERS

III

For finished shaper, fold on break line and trace on clean sheet of paper.

J from F is $1\frac{1}{8}$ " (Width of collar at shoulder-line). Shape as indicated.

Illustration shows the 3 Button Single Breasted, Notch lapel.



UNDER COLLAR DRAFT -SHAPERS-

I UNDER COLLAR DRAFT:

Using front and back as a guide, label points H-G-I on front, 13 and A, on back neck run.

Extend shoulder line and breakline; 1, falls on intersection of shoulder line and breakline.

2 from 1 is $\frac{1}{2}$ " (This gives the outer edge of the collar the necessary ease over the shoulder). Draw line G to 2, and extend toward 3.

3 from 2 equals back of neck-run, A to 13.

4 from 3 is $1\frac{1}{4}$ inches.

5 from 2 is $1\frac{1}{4}$ ". (Equals collar-stand at back). Draw line 4 to 5 and shape into G and to H as indicated.

Lay long arm of square on 4-5 line with short arm resting on 3, then draw line to 4, and extend toward 8, locating center back of under collar.

6 from H is $1\frac{1}{8}$ " ($\frac{1}{8}$ " less than distance from H to I).

7 from 2 is $1\frac{1}{8}$ ".

8 from 3 is $1\frac{5}{8}$ ". Shape outer edge of of collar using points 6-7-8 as a guide. (Distance from 8 to 3 equals width of collar stand plus $\frac{1}{8}$ ").

Measurements along outer edge of under collar are flexible and can be shaped for individual taste or fashion.

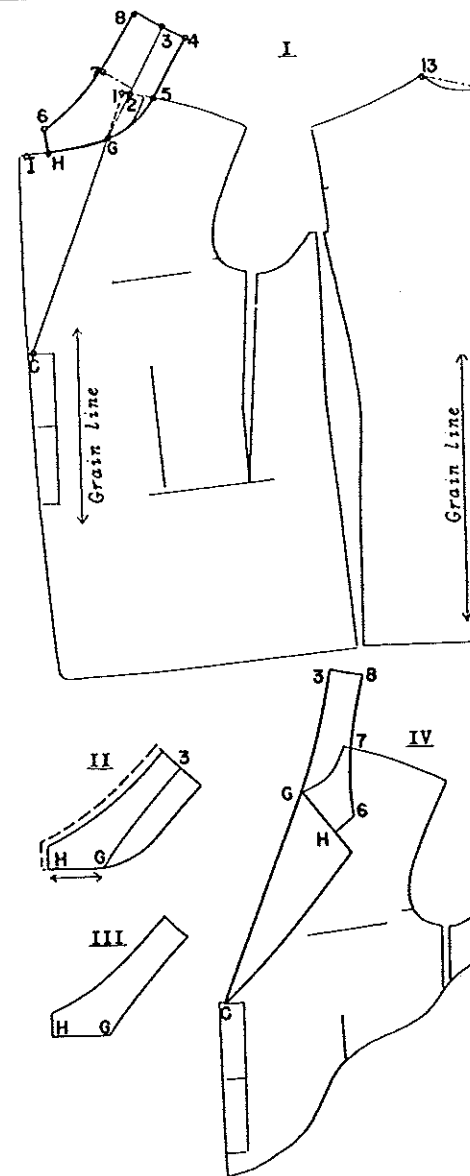
Grain line on front, runs parallel to center-front-line; On back, lower portion of center back run is used as a guide for the grain line.

II

Shows under collar with extra $\frac{1}{2}$ " added along outer edge and at notch as a protective measure for shaping. Note grain line at points G and H.

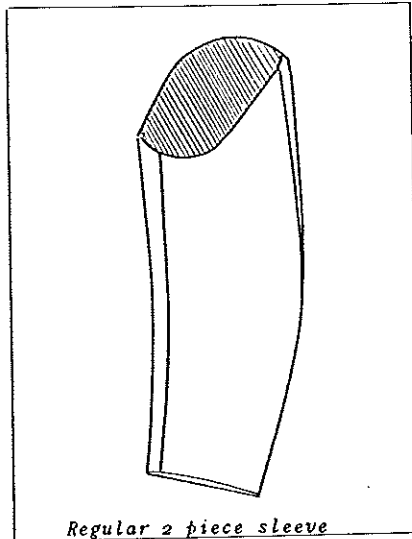
III

Under collar shaper to be used in conjunction with lapel shaper.

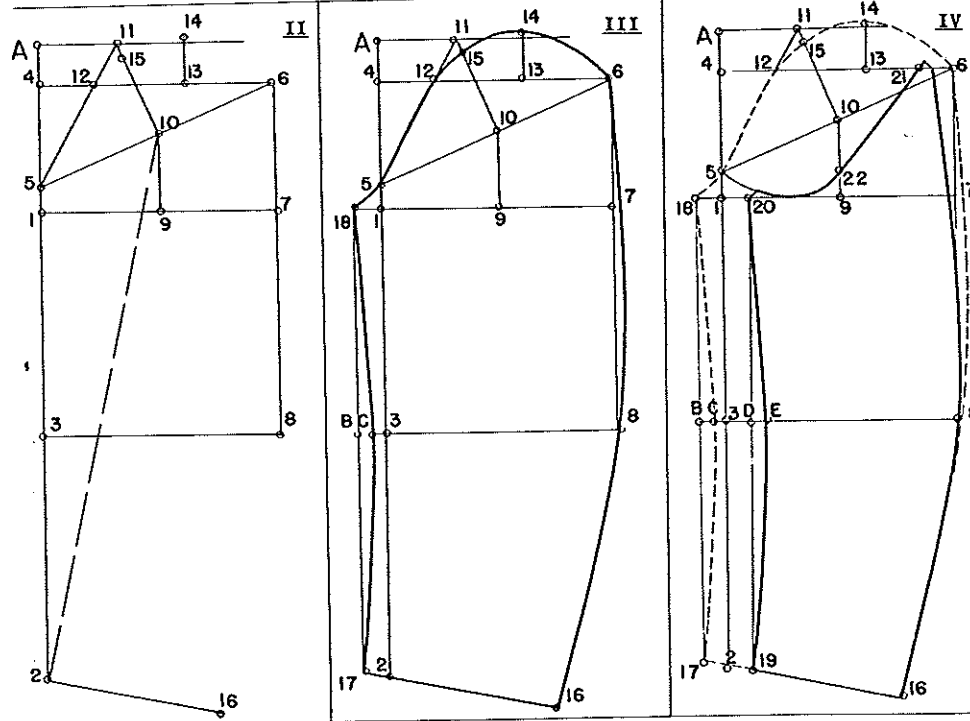
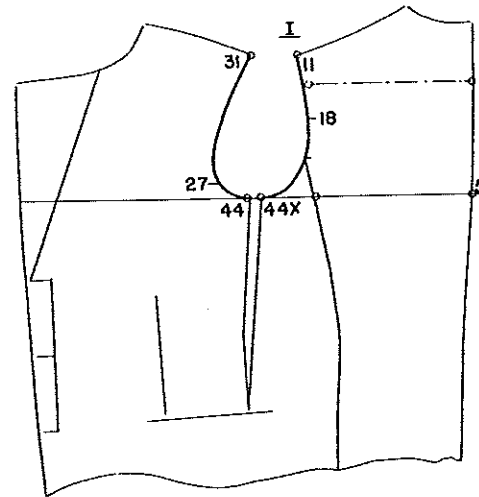


IV
Illustrates the lapel and under collar shaper. Distance from C-G-3 equals Rolling line (*Break-line*).

REGULAR 2 PIECE SLEEVE



Regular 2 piece sleeve



I

Represents the sack coat, and shows how to measure the Arm scye to obtain the sleeve draft.

First measure the circumference, 31 to 27, 27 to 44, (Reduce $\frac{1}{2}$ " for two seams at under-arm-dart) 44x to 11 (19"). For the size 38 Breast the proportionate Arm scye should equal half of the Breast measure. Point 27 is the front-notch; 18 represents the back-notch. To draft sleeve, proceed as follows:

The arm-scy equals half the Breast measure, 19" in this instance. Drafting power is Arm scye measure 19 or half the Breast measure.

MEASUREMENTS:

Breast 38 inches
Sleeve inseam $17\frac{1}{2}$ inches

II

BASIC LINES:

A, is starting point, square back and down.
1 from A, is Arm scye on 3rd division. (Look for 19 on 3rd division of square). Equals same distance as 1 to 5 on sack coat.
2 from 1 is sleeve inseam.
3 from 1 is half sleeve inseam less $\frac{1}{2}$ " ($8\frac{1}{2}$ " Elbow line).
4 from 1 is Arm scye on 4th division. Equals same distance as from Breast line to back notch (18) on sack coat.
Square back from points 4-1-3.
5 from 1 is $\frac{7}{8}$ ". Equals front notch.
6 from 5 is Arm scye on division of Halves on the square (19 on half division). Draw line 6 to 5. Equals Line of Pitch.
Square down from 6, down to elbow line.
7 falls on line 1.
8 falls on elbow line.
9 is center between 1 and 7. Square up to line of pitch.
10 falls on line of pitch. Lay long arm of square on line of pitch with point resting on 10, and draw line toward 11.

11 falls on top line. Draw line 11 to 5.
12 falls on back notch line.
13 is center between 12 and 6. Square up toward 14.
14 is $\frac{1}{4}$ inch above straight line.
15 from 10 is Arm scye on 6th division. (19 on 6th division of square).

OPENING AT WRIST:

Draw a dash line, 10 to 2. Lay long arm of square on 10-2 line with point resting on 2, and square back toward 16.

16 from 2 is $6\frac{1}{2}$ ". Equals 12 inches for the opening, plus 1 inch for four seams.

III

TOP SLEEVE:

17 from 2 is $\frac{7}{8}$ inch.
18 from 1 is 1". Draw line 18 to 17.
B, falls on elbow line.
C from B, is $\frac{5}{8}$ ". With aid of curve stick, shape sleeve inseam 18-C-17, as indicated.
Shape outseam, 16-8-6 as indicated.
With aid of french curve and graphite, shape sleeve head, using points 6-14-15-5-18 as a guide.
Trace outline of Top sleeve on clean sheet of paper.

IV

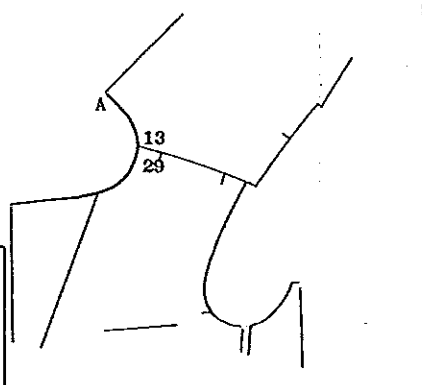
UNDER SLEEVE:

19 from 2 is $\frac{7}{8}$ ". Equals same as 2 to 17.
20 from 1 is 1". Equals same as 1 to 18. Draw line 20 to 19.
D, falls on the elbow line.
E from D, is $\frac{5}{8}$ ". Equals same as C to B on top sleeve. Shape sleeve inseam from 19-E-20.
21 from 6 is $1\frac{1}{4}$ ".
22 from 9 is $\frac{1}{2}$ ". Draw line 21 to 22. With aid of french curve, shape from 22 to 20, using points 22-20 as a guide.
Add $\frac{1}{4}$ " seam at 21, and shape outseam as illustrated.

SACK COAT ANALYSIS

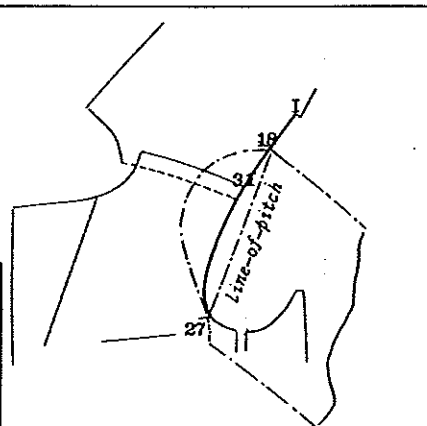
I

JOINING SHOULDER SEAMS: $\frac{3}{8}$ " to $\frac{1}{2}$ " fullness over largest part of blade on backpart is considered sufficient for the normal figure. For the figure with heavy blades, slightly more fullness is required; a little less, for the figure with flat blades. Also note the proper run of the gorge, along points A-13-29.



II

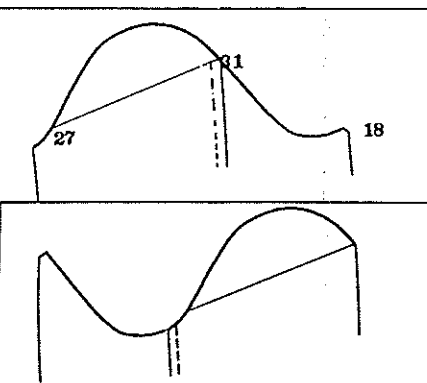
LINE of PITCH: For a well hanging sleeve, distance from front notch to back notch should equal half of the Arm scye. The proper hanging sleeve will fall at about the center of the side pocket of the coat. It shall be borne in mind if the figure has a tendency to carry arms toward the rear, the sleeves should also hang slightly to the rear. To correct this abnormality, drop front notch a fraction, and raise back notch a like amount. The rule is the reverse, for the figure carrying arms toward the front. Note proper run of arm scye of sack coat from 27-31-18-I.



III

Shows proper run of sleeve head when outside seams are joined.

FULNESS in SLEEVE: (As related to arm-scye run, on page 44, diagram I) The sleeve draft provides a certain amount of fullness, and allowance for seams which is to be properly distributed in the Arm scye of the sack coat. There is $1\frac{1}{2}$ " allowed on the top sleeve from 27 thru 31; $\frac{3}{8}$ " on under sleeve from 31 thru 18; and 1" for four seams, which will total $3\frac{3}{8}$ ". In measuring the sleeve-head in relation to the arm scye, this figure ($3\frac{3}{8}$ " represents the minimum amount required for makeup.



IV

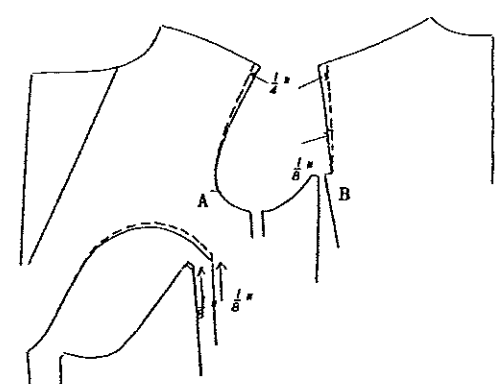
Shows proper run of sleeve-head when inside seams are joined.

SACK COAT ANALYSIS

I

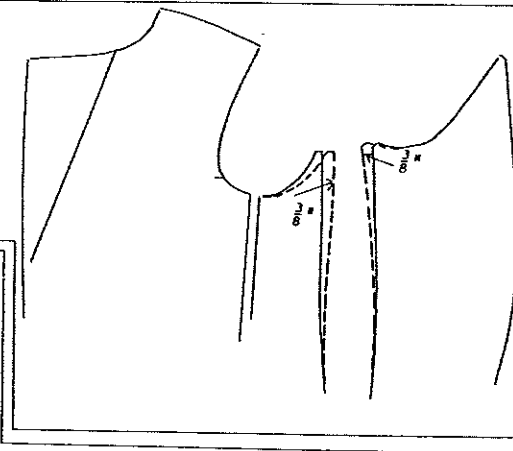
NARROW SHOULDER: In making adjustments from a regular pattern, where the shoulder run is to be reduced, a portion of this amount must be added to the sleeve for satisfactory results. Using front and back as a guide, label points A and B as shown. Points A and B are pivot-points. Reduce $\frac{1}{4}$ " as indicated, and re-shape as per dash lines.

Amount lost at back notch of coat ($\frac{1}{8}$ " in this case) is added at back notch of sleeve as illustrated. The reverse, is the rule for the wider shoulder.

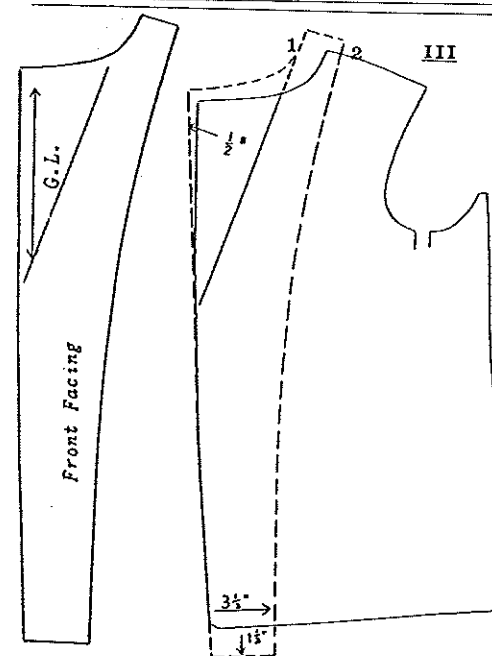


II

EASY ARM SCYE: When making adjustments for a larger arm hole, add about $\frac{3}{8}$ " to side seam of front, and remark as indicated. So as to compensate for this gain, add $\frac{3}{8}$ " to under sleeve as illustrated.



III



III

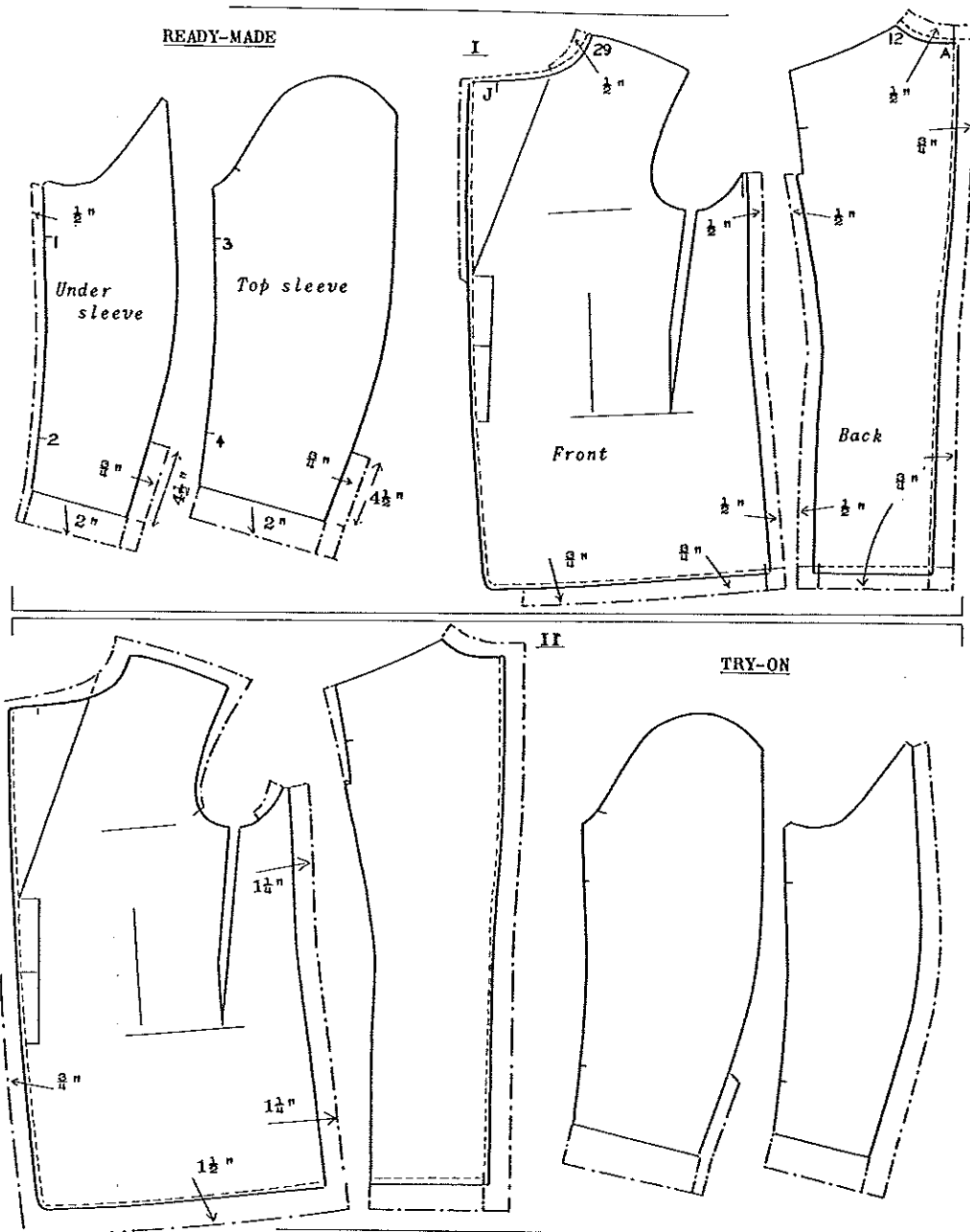
FRONT FACING: Use frontpart as a guide to draft front facing.

Extend breakline $\frac{1}{2}$ inch beyond the shoulder run, locating 1.

2 from 1 is 2 inches. Make additions as illustrated.

Note grain line, on lapel part of front facing.

ADDING OUTLETS



ADDING OUTLETS

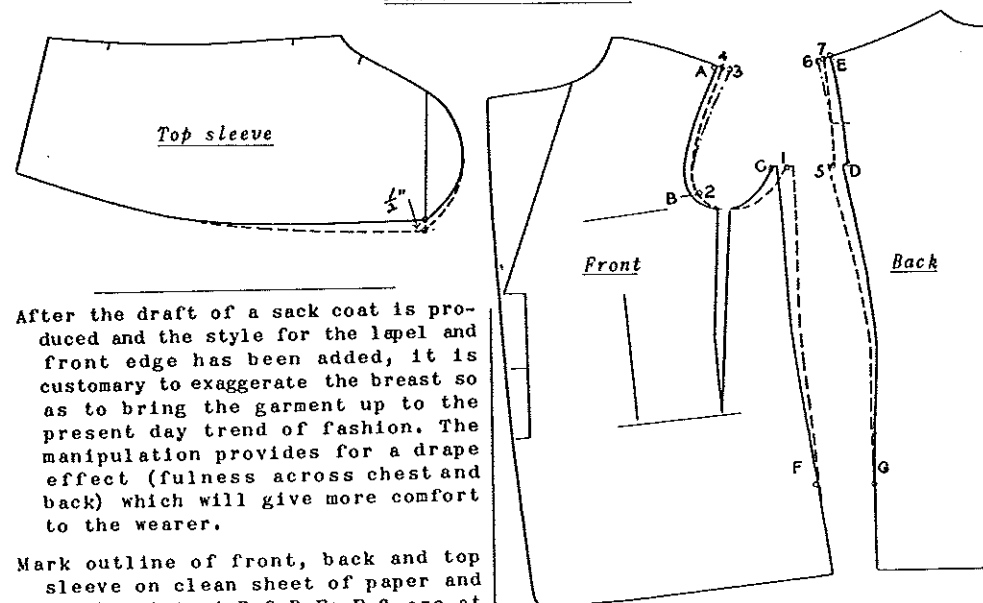
In completing a pattern, always add outlets, and seams wherever necessary. The sack coat draft provides a $\frac{1}{2}$ " seam allowance all around the pattern except thru, Back-neck-run (A-12) and Gorge-run. (29-J)

sleeve and under sleeve. Measure down 3" to locate 1 and 3; measure up 3" to locate 2 and 4. The sleeve draft provides about $\frac{3}{8}$ " more length between 1 and 2 on under sleeve, which is to be eased in between the notches.

I
READY MADE: When designing for the retail trade, outlets can be added as illustrated in diagram I on page 48. Make corresponding notches on top

II
TRY-ON: When designing for the individual the garment is assembled for a try-on (fitting) before it is completed. Outlets can be added as illustrated in diagram.

DRAPE MANIPULATION



After the draft of a sack coat is produced and the style for the lapel and front edge has been added, it is customary to exaggerate the breast so as to bring the garment up to the present day trend of fashion. The manipulation provides for a drape effect (fulness across chest and back) which will give more comfort to the wearer.

Mark outline of front, back and top sleeve on clean sheet of paper and label points A-B-C-D-E; F-G are at the seat line. Distance from C to 1, and D to 5 equals $\frac{1}{2}$ " for each inch of Breast exaggeration.

FRONT: 1 from C is $\frac{1}{2}$ ". With aid of front, shift pattern to 1, and re-mark to shoulder line, 3.
2 falls on front notch.
3 falls on shoulder line.
4 is center between A and 3. Re-mark from 4 to 2, and 1 to F as indicated.

BACK: 5 from D is $\frac{1}{2}$ ". With aid of back, shift pattern to 5, and re-mark toward shoulder line, 6.

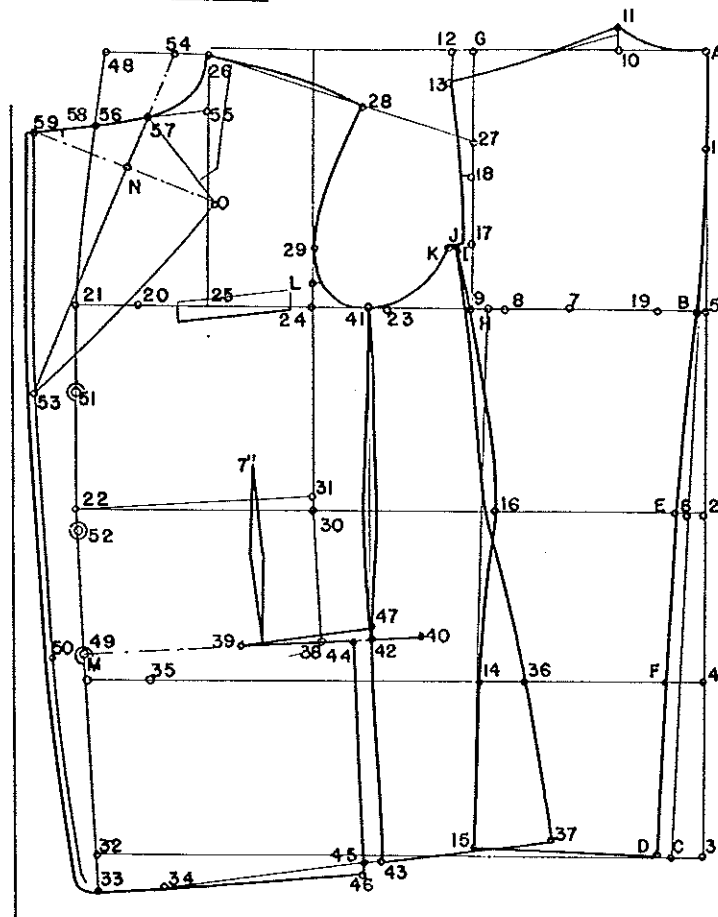
6 falls on shoulder line.

7 is center between 6 and E. Re-mark from 7 to 5, and 5 to G as indicated.

DRAPE SLEEVE: For the drape sleeve add $\frac{1}{2}$ " at back notch of top sleeve and re-shape as indicated.

Balance of garment remains without change. Add outlets.

3 BUTTON SINGLE BREASTED DRAPE
WITH SIDE BODY



MEASUREMENTS:

Height 5'8"
Waist length 18 inches
Full length 30½"
Breast 40 "
Waist (trouser) 35 "
Seat 42 "
Sleeve inseam 17½ "

Drafting power is half breast 20.

A, is starting point square out and down.
1 from A is 3¼". (3" for the short, 3¾" for the long)
2 from A is waist length.
3 from A is full length plus ¼".
4 from 2 is 6½".
5 from 1 is 1/3 Breast on division.

Square out from points 5, 2, 4, 3.

6 from 2 is ½"; draw line 6 to 1, and continue to bottom line.

B falls on breast line.

C falls on bottom line.

D from C is ½".

E from 6 is ½"; draw line D to E, and E to B.

F, falls on Seat line. Shape Center back as indicated.

7 from B is 1/4 Breast on division.

8 from 7 is 1/8 Breast on division.

9 from 8 is 1¼". Square up to top line.

G, falls on top line.

10 from A is 1/8 Breast on division plus 1".

11 from 10 is 7/8". Shape neck-run A to 11.

12 from G is ¾"; square down toward 13.

13 from 12 is 1¼". Draw line 13 to 11, and shape run of shoulder.

14 from F is 1/3 Seat on division plus ¼".

H, is center between 9 and 8. Draw line 14 to H, and continue down to bottom line.

15 is squared forward off D-E line.
16 is ⅜" from straight line.

17 from 9 is 1/8 Breast on division.
I from 17 is ¼". Shape arm-scye I to 13.
J from I is ¼". Shape side-seam J, 16, 14, 15.

18 from 9 is 1/4 Breast on division.

FRONT PART:

Continue lines A, 5, 2, 4, 3, forward.

19 from B is 1½"--Drape effect--
20 from 19 is half of full breast.

21 from 20 is 2½".

22 is squared down to waistline from 21.

23 is center between 21 and B.

24 from 23 is 1/8 Breast on division plus ½". Square up to top line.

25 from 21 is 1/4 Breast on division. Square up to top line.

26 is ¼" below top line. Square forward.

27 from 9 is 1/3 Breast on division. Draw line 26 to 27.

28 from 26 is ⅜" less than 11 to 13.
29 from 24 is 1/8 Breast on division. Draw line 28 to 29.

K from J is ¼". Shape arm scye and shoulder run as indicated.

L from 24 is ⅜"--Front Notch--

30 is squared down to waistline from 24.

31 from 30 is ⅝". Draw line 31 to 22. Lay short-arm of square on 22-31 line and square down toward 33.

M, falls on seat-line.
32 falls on bottom line.

33 from 32 is 1/12 Breast on division. Square back toward 34.

34 from 33 is 2½".

35 from M, is 2½".

36 from 35 is 2/3 Seat on division. Shape side seam, J to waistline, to 36 and to bottom line.

37 from J is same length as 15 to J. Draw line 37 to 34.

Lay long arm of square on 22-31 line with point resting on 31; square down toward 38.

38 from 24 is 2/3 sleeve inseam on division plus 1".

39 from 38 is 3½". (Pocket line is parallel to 22-31 line).

40 from 39 is 7¼". (1" of pocket-line will be lost in makeup).

41 from 23 is 1/2". Square down to pocket line.

42 falls on pocket line. Square down to bottom toward 43, off the pocket line;

43 intersects the bottom line.

44 from 42 is ½ inch.

45 from 43 is ½"; draw line 44 to 45, and toward 46; continue line 33-34 toward 46;

46 falls at intersection of 44-45 line, and 33-34 line.

47 from 42 is same distance as 45 to 46; (½") draw line 47 to 39.

The Side-Body is represented by points J-36-37, 37-43, 43-47-41.

48 from 26 is 1/6 Breast on division, plus ½"; draw line 21 to 48.

3 BUTTON SINGLE BREASTED, NOTCH LAPEL:
49 is a point in line with side pocket.

50 from 49 is ¾ inch.

51 from 49 is 8½ inches.

52 is center, between 51 and 49.

53 from 51 is 1 inch.

54 from 26 is 1¼"; draw break-line, 54 to 53.

55 from 26 is 1/8 Breast on division, less ¼".

56 from 48 is 1/6 Breast on division, less ½"; draw line 55 to 56, and continue toward 59;

57 falls at intersection; shape run of gorge as indicated.

58 from 57 is 2½ inches.

59 from 58 is 1¼ inches.

SHAPER:
N, is located by laying long arm of square on breakline, short arm resting on 59; square back to breakline:

O to N is same distance as N to 59.

Add ¼" seam to front edge as indicated.

THE DRAPE SACK COAT, is a comfortable stylish garment that fits snug over the hip line, and fits easy thru the waist and chest.

Draft Regular Sleeves. then add drape to upper sleeve.